

Ministry Reports

TABLE OF CONTENTS

The Rt. Rev. Mark Lattime - Canonical Report	1
Suzanne Krull, Canon for Finance and Administration - Ministry Report	3
Lynnette Winfrey, Administrative Assistant - Ministry Report	7
Melissa Ward, Bishop’s Assistant and Diocesan Secretary - Ministry Report	8
The Rev. Betty Glover - Standing Committee Ministry Report.....	13
The Rev. Marilyn Duggar – Commission on Ministry Report.....	15
Hugh Gellert - Investment Committee Ministry Report	16
Aquilluk Hank/Gail Gallahorn – Arctic Coast Deanery Ministry Report	18
The Rev. Katherine Hunt - South Central Deanery Ministry Report.....	19
Robert Coghill - Southeast Deanery Ministry Report.....	21
Faith Into Tomorrow - Good News Endowment 2022 Annual and Award Reports.....	23
The Rev. Belle Mickelson - Dancing with the Ministry Spirit Report	36
2021 Parochial Report Information	38



Canonical Report from the Bishop October 2021 – September 2022



Sabbatical: February 1st to May 7th, 2022

Official Visitations in 2021:

Via Zoom (due to COVID)

St. John's, Ketchikan
St. Philip's, Wrangell

In Person

All Saints', Anchorage
Holy Spirit, Eagle River

Official Visitations in 2022:

Via Zoom (due to COVID)

In Person

St. Brendan's, Juneau
All Saints', Anchorage
St. Matthew's, Fairbanks- Baptism
St. Bart's, Palmer- Confirmation
St. Mark's, Nenana
St. Jude's, North Pole

Canonical Report from the Bishop

October 2021 – September 2022

Confirmed	1		
Received	0		
Installations	0		
Letters Dimissory	1	Lucas Michael Grubbs	
Acceptance of Letters Dimissory	3	Lucas Michael Grubbs Nancy Carol James Israel Alexander P Gomez	From D. of Colorado From D. of Washington From D. of Colombia
Retirements	0		
Parish Changes	1	The Rev. Betty Glover	

Small Mission Clergy:

5 Congregations, 4 Clergy

The Rev. Enoch Adams, Jr. serving

Epiphany Kivalina, Kivalina

The Rev. Marilyn Duggar serving

St. Mark's, Nenana

The Rev. Susan Mitchell serving

Holy Trinity, Circle

The Rev. Susan Mitchel serving

St. John's, Eagle

The Rev. Mary Nathaniel serving

St. Stephen's, Ft. Yukon

Ordinations: 1 August Jacob Lambers - Deacon

Accepted into the process for Holy Orders

Postulants: 2 Hannah Moderow, Erin Tulip

Candidates: 0

Nominee: 0

Episcopal Diocese of Alaska

Ministry Report

Thank you and God bless you for the ministry that you provide to the Episcopal Diocese of Alaska. Ministry Reports are a way to share your ministry news so we might better understand and appreciate God's work thru this ministry. This report is included in the Diocesan Convention delegate packets and Convention Journal. Ministry Reports received after the deadline may not be included in this year's convention packets! ***Please return by 9/14/2022.***

Name: Suzanne Krull Committee/Deanery/Ministry: Canon for Finance and Administration

1. Please highlight the **activities/events and/or projects** of your ministry/committee since last year's convention.
 - **Maintain high standards for financial reporting, following GAAP (Generally Accepted Accounting Principles). Ensure that our finances were audited by an outside agency. The 2021 audit was completed and reviewed by Standing Comm. August 2022.**
 - **Developed 2023 budget that reflect the bishop's vision and strategic plan. Managed, with the Standing Committee, budget changes/recommendations throughout 2021 and 2022.**
 - **Rolled out Congregational Relief Grants and awarded 26 congregations with grant funding. Grants were made available to any church in the Episcopal Diocese of Alaska who experienced a decline in Operating Income from 2019 to 2020 or 2021.**
 - **Acted as the Bishop's Staff liaison to various diocesan committees including Standing Committee, Investment Committee, FIT Committee, Convention Budget Committee, etc.; providing support, reporting, logistics, continuity, and guidance.**
 - **Continued to work with Church Pension Group to ensure our insurance needs are met and pension plans, for both clergy and lay employees, are provided per General Convention resolutions and TEC canons.**
 - **Manage and stay current on the Denominational Health Plan, including the potential impact Patient Protection and Affordable Care Act (ACA) may have. A copy of said policy can be found on the diocesan website.**
 - **Attended the three deanery meetings that have taken place, either virtually or in-person; Interior & South Central in-person, Southeast Zoom. The Arctic Coast Deanery has not met yet in 2022. Met with the Interior Executive Committee to assist in planning and executing, including making hotel arrangements, their in-person deanery meeting in April.**
 - **Assisted congregations with administrative and other issues as they arose and provided support to the Interior Deanery Executive Committee & Arctic Coast Deanery leadership.**
 - **Provide support and information to congregations, navigating the various programs, grants, relief available due to COVID-19.**

Convention Ministry Report, cont.

Suzanne Krull: Bishop's Staff, Canon for Finance and Administration

Page 2

- **Navigate the various relief programs, grants, and loans available through the CARES ACT and other COVID-19 relief programs and determine which best fits the diocesan needs. Stay abreast of all changes to legislation and the impact those changes will have on our participation in programs. This is a daunting task as things are constantly changing as the impact and information relating to the pandemic is consistently changing.**
- **Research and keep current with all State, Local and CDC COVID-19 Health Mandates, Restrictions and Guidelines and ensure we are compliant. Develop and maintain Bishop's Office Mitigation Plan. Work with staff to ensure guidelines and mitigation plans are followed.**
- **Continue to provide Human Resource support to the staff and congregations.**
- **Assist Bishop Mark in developing Congregational Mitigation Plans and Travel restrictions.**
- **Continued implementation of the Small Mission Clergy Program. We currently have five congregations participating. We will continue the program in 2023; funding for the program is included in the 2022 & 2023 Budget.**
- **Engage with the College of Congregational Development in the Diocese of Olympia to expand partnering in ministry. Attending a trainers meeting in April and was a trainer at the Diocese of Olympia summer session in June. There were no congregations available to attend the 2022 College. The plan is to send four congregational teams in 2023.**
- **Along with the Bishop, plan the in-person training session for the Interior scheduled for October 14-15, 2022. Work with Julie Lytle, Director of Distributive Learning Initiatives & The Rev. Mary Crist, Indigenous Theological Education Coordinator for The Episcopal Church to explore exciting opportunities for further education through programs called: Pathway to Baptismal Living & Two plus Two.**
- **Continued enrollment in a diocesan Membership to TENS (The Episcopal Network for Stewardship), allowing resources to be available to all our congregations.**
- **Provide administrative and program support for the planning and implementation of Diocesan Convention. The planning, coordination and execution of this endeavor is extensive; it has and continues to consume a great deal of time and energy.**
- **Provide administrative and financial support to congregations as needed, including but not limited to insurance & property matters, financial, budget and accounting matters, employment issues, pastoral needs, etc.**
- **Work with congregations that have vacant clergy positions and are in various stages of a clergy search process to understand the administrative and financial impacts. Provide support with position listing and advice and counsel to search committees and search committee chairpersons.**
- **Enroll, learn and utilize tools to adapt to the new virtual reality; including but not limited to Zoom, Microsoft Teams, EZText, Egive, Constant Contact.**

Convention Ministry Report, cont.

Suzanne Krull: Bishop's Staff, Canon for Finance and Administration

Page 3

- Network with Province 8 Transition Ministers and attend Spring/Fall meetings.
- Please see the enclosed financial reports, including 2023 Diocesan Budget, Congregational Pledge Reports, Parochial Report Data, and 2021 Financial Section of Delegate Packets
- Was honored to be a part of St. Matthew's Lenten Centering Prayer Series leadership team, with The Rev. Betty Glover and parishioner Emily Low. We held Zoom Centering Prayer sessions on Wednesday evenings @ 5:30p from March 9 – April 20, 2022.
- Coordinate with Chancellor Sarah Stanley and Bishop Mark and outside counsel in the filing of Proof of Claim for EDA & Parishes in the Boy Scouts of America Bankruptcy case. Continue to monitor process and receive updates from our attorney. In the disclosed claims listed in the case, we were informed the Diocese of Alaska and/or any of our congregations have not been listed.
- Facilitated a Staff Sacred Grounds Circle.
- As Chief of Staff, provided support, direction and leadership during Bishop Mark's sabbatical, Feb 1 – May 8, 2022.

2. Tell us about the **goals** of your ministry for the upcoming year:

My goal is to continue to provide for the administrative needs of the Bishop's Office and diocese. The first priority is to ensure that our finances are recorded accurately and timely and our accounting systems and procedures follow GAAP, Generally Accepted Accounting Principles. Continue to work with the auditors to ensure we are compliant with the new Non-Profit Accounting Rules (ASU 2016-14). Continue providing congregational development tools with the continued implementation of the Small Mission Clergy Program, the participation of congregational teams to the College for Congregational Development and providing regional licensed ministry training events. Other administrative needs include insurance, pension, legal issues, property issues, building and ground maintenance, implementation of the Medical Insurance Policy which supports the DHP (Denominational Health Plan) Canon, monitor impact of and ensure compliance with Patient Protection and Affordable Care Act (ACA) on our policies and practices. Support congregational ministry by providing deanery funding to be used at the discretion of each deanery for their congregational ministry development. Provide support to the deanery structures, as requested. Continue to keep current with the legislation, guidelines, health mandates, etc. relating to COVID-19 and measure and adjust to there impact on the Episcopal Diocese of Alaska.

3. **Stewardship.**
- | | |
|------------------------------------------|-----|
| Do you receive support from the Diocese? | Yes |
| If Yes, are you within budget? | Yes |
| Are you raising additional funds? | No |

Please explain your overall financial situation: **The current estimate for the diocese is to be within budget by year end 2022. The Administrative Expenses are also within budget.**

Convention Ministry Report, cont.

Suzanne Krull: Bishop's Staff, Canon for Finance and Administration

Page 4

4. Please share any other **comments or concerns** that you have regarding your ministry.

I would like to publicly acknowledge and thank the other members of the bishop's staff for tremendous effort and accomplishments made with very limited resources and in very trying times. In particular, I would like to say a special ***Thank You*** to **Lynette Winfrey-Frank**, the Administrative Assistant; she continues to go "above and beyond" to support this ministry. I'd also like to say ***Thank you*** to **Melissa Ward**, the Bishop's Assistant/Receptionist for providing support needed to attend to the administrative arm of the bishop's office.

If you need more space, please feel free to use additional pages.

Episcopal Diocese of Alaska

Ministry Report

Thank you and God bless you for the ministry that you provide to the Episcopal Diocese of Alaska. Ministry Reports are a way to share your ministry news so we might better understand and appreciate God's work thru this ministry. This report is included in the Diocesan Convention delegate packets and Convention Journal. Ministry Reports received after the deadline may not be included in this year's convention packets! ***Please return by 9/14/2022.***

Name: Lynnette Winfrey-Frank, Administrative Assistant
Committee/Deanery/Ministry: Bishop's Staff

1. Please highlight the **activities/events and/or projects** of your ministry/committee since last year's convention.

- Assist Suzanne Krull, Administrator
- Assist Bishop's Staff with office support.
- Enter Parochial Report Information for congregations that do not have internet access. Make phone calls to congregations to make sure reports are turned in by due date.
- Payroll/deposits/journal entries/bank reconciliations/medical insurance/property insurance/pay diocesan bills/filing copying.
- Support during Diocesan Convention and other trainings or deanery meeting.
- Support during yearly audit.

2. Tell us about the **goals** of your ministry for the upcoming year:

To continue doing my job and thankful for the 20+ years of working here. Thankful we can all see each other at this year's convention.

3. **Stewardship.** Do you receive support from the Diocese? Yes_ No_
If Yes, are you within budget? Yes_ No_
Are you raising additional funds? Yes_ No_

Please explain your overall financial situation:

4. Please share any other **comments or concerns** that you have regarding your ministry.

I would like to thank the entire Bishop's Staff for having a wonderful place and team to work with.

If you need more space, please feel free to use additional pages.

Episcopal Diocese of Alaska

Ministry Report

Thank you and God bless you for the ministry that you provide to the Episcopal Diocese of Alaska. Ministry Reports are a way to share your ministry news so we might better understand and appreciate God's work thru this ministry. This report is included in the Diocesan Convention delegate packets and Convention Journal. Ministry Reports received after the deadline may not be included in this year's convention packets! *Please return by 9/14/2022.*

Name: *Melissa Ward* Committee/Deanery/Ministry: BRH

1. Please highlight the activities/events and/or projects of your ministry/committee since last year's convention.

Supporting the Bishop:

- **Maintain Bishop's calendar- Scheduling and adjusting as needed.**
- **Arrange Bishop's travel and visitations. This can include, but not limited to: signing up for conferences, maintaining contact before the event, making travel arrangements at the destination (rental car, bus, train, or mentor), booking hotel accommodations, finding out what services will be needed at Visitations (baptism, Confirmation, etc.), and Preparing a folder with all of this information, in an organized fashion for easy retrieval.**
- **Maintain Bishop's Log- This log is used to fill out the Canonical Report each year. Contains all services he has provided, ordinations, postulants, SMC and more.**
- **Maintain all records for the Bishop: some examples are; notices form other diocese on actions with clergy, items pertaining to the different parishes, important emails, Lay Leader documents, Postulant files, and much more. I am working compiling a file on Bishop's time here at the Diocese. I just found out recently, that after each Bishop Leaves, his file is to be sent to the National Archive. I am working on getting our past Bishop's information, that is still here, ready to be sent the archive (after I scan it and send the digital files to the UAF Archive. That being said, I am trying to compile a file that will show all that Bishop Mark Lattime has done since he was here. For example: I print off his calendar each month, that is a record of all his actions through the year, and it helps me complete my CPG report each year. I have also started**

printing the Clergy Information from CPG on each Clergy Member that he has ordained while he has been in the Diocese of Alaska.

- Last year I started to scan all the Clergy files (active, retired, moved, and deceased) into digital files. I take each file, organize it into the desired categories, make cover sheets for those categories, then I scan each packet into the individual's digital file. This is so that all the files will be set up exactly the same for continuity and ease of reference when needed. This is a slow process and I work on it when I am not doing my regular tasks.
- I have also created a spreadsheet file that has All of our clergy and lay, their contact information, ordination information and more. I have different tabs for different information groups that are referenced regularly. I created this in a hope to make it easier for me and any future secretaries, to have continuity and all the pertinent information at their fingertips in one place.
- Respond to the needs of those who call on us for prayer, funeral, and other services; finding clergy when Bishop is not available. Then helping to arrange their travel, (Travel Authorizations), and maintaining a file on the Authorizations for Lynnette.
- Create any documents, certificates, or any other required forms. I also order the Baptismal, Reception, Confirmation, and grandparent cards that Bishop and Clergy u
- Assist with correspondences. Proofread, make suggestions and the produce the resulting document.
- Locate any needed information for the Bishop.
- Monthly Ordination Anniversary Cards. Keep list of dates, put together each months' cards with names (and according to Priest or Deacon). I also print, cut, and prepare the cards beforehand. Once Bishop has filled out the cards for that month, I mail them off. I also post the names on the Clergy Facebook Page each month to celebrate.
- Provide support and hospitality for the clergy and other visitors.
- Provide overall support and attention to the Bishop as needed So that he may perform his tasks Effectively.

Supporting the Diocese Office:

- **Answer calls, emails, and other forms of correspondence.**
- **Order all supplies for the Bishop and the office staff. Keep rotating stock of necessities (Bathroom products, cleaners, PPE, etc.)**
- **Produce the mailing Labels for our office, churches, clergy, and any other group needed.**
- **Yearly Diocesan Calendar- Produce the picture, get approved, and then order the desired quantity so that they arrive in December. Once in stock, I advertise that the calendars are available, take orders, and ship them out. I created a spreadsheet to keep track of who ordered, when they were mailed and when they were paid for. I use this to help decide how many to order the next year.**
- **Christmas Cards- I create the image proof. I normally produce 6-10 proofs and when they have picked the image they like, I will tweak it according to their feedback. Once approved by staff, then I either print them inhouse or have them produced for us. Then mail them out.**
- **Prepare items, when requested, for mass mailings; such as FIT Grant packets, Meeting packets, etc.**
- **Receive the Lectionaries from Church Publishing Group. They arrive in large stacks of each lectionary; There are usually about 12 different lectionaries. I separate them by date. Each lectionary stack has enough for me to give each of the churches on the lectionary list, 11 copies of each lectionary. Because of the size of the packets, I separate the mailing into two groups (6 lectionaries with 11 copies each for each church on the list). This process usually takes me two days to complete; one day for 6 lectionaries stacks.**
- **Create and distribute the weekly newsletter through constant contact. I add bishop's articles to the Website and then put the links in the newsletter. I then make the newsletter version for those who are visually impaired (the VI Edition). I send it out first and then place the link for that one in the regular newsletter. There is a section that explains the VI Edition and lets people**

preview it to decide if they would like to switch to the more basic and easier to read version. I gather articles from each staff member, items from the national church, and from congregations that give me announcements they wish to have distributed. I send out the newsletter and then archive it to the website and post it on Facebook to all of the groups (Clergy, Lay, and Episcopal Diocese page).

- **Modify and edit the Diocesan Website; adding and removing content as requested.**
- **Prepare thank you letters based on Lynnette's Monthly Deposit sheets. I create the thank you letters, make two copies of each, I mail one copy and give the second copy (attached to the Deposit sheet) back to Lynnette for her files. I try as best I can to do this task as she makes the deposits so that the letters go out in a timely manner, based on when the money arrived.**
- **When needed, create songbooks for churches (print book, create and laminate cover, and then bind it). I created one new songbook that will take care of all churches (plus one for Gwitchin).**
- **Provide administrative support to all Diocesan staff as needed.**
- **Welcome all visitors and maintain a clean and welcoming office environment.**

2. **Tell us about the goals of your ministry for the upcoming year:**

- **I will continue to do the best job I can to support both the Bishop and the Diocesan Staff.**
- **I hope to continue to streamline the process of scanning the physical files. This past year I obtained the ability to scan straight to my computer, this has helped to move it a little faster.**
- **I have also recently started creating an SOP (standard operating procedures) book for my position. It contains things like step by step directions for : the Diocesan Convention, General Convention, Winter Talk, all other tasks listed in the above section of this report, and any other items that may be of use. This way, in the future, when I am no longer here, the next person will have a detailed list of jobs they need to complete and how to do them step by step; list of all vendors they may need to deal with, and any other information that will help them ease into this job with as little stress as possible and maximize their learning efficiency. My hope is to get this completed before this time next year. I will keep it as a digital file so that it can be edited as things change or are added in (as well as a printed copy for anyone to reference).**

3. Stewardship. Do you receive support from the Diocese? Yes_ **No X**

If Yes, are you within budget? yes_ No_

Are you raising additional funds? Yes_ No_

Please explain your overall financial situation:

4. Please share any other comments or concerns that you have regarding your ministry.

I believe I say this every year and will probably continue to say it. I am thankful every day for this job and the people I work with. Bishop, you are one of a kind and I am so thankful you are my boss. I am so glad that you were able to finally get your Sabbatical this year and congratulation on your recent wedding with Patricia. Suzanne, I appreciate you and all that you do for the me and the Diocese, you wear many hats and one of the is as a friend to us all. Thank you. Lynnette, you are a genuinely lovely person, heart and soul. You care about all of us; those in the office and those who seek you out for help. I appreciate your friendship. I pray that you all have a wonderful year ahead.

The Standing Committee met by Zoom, and finally in-person to conduct its business following the 2021 Diocesan Convention. We welcomed new members and gave thanks for the work of those whose terms had expired.

Continuing with the work begun in 2021, the Standing Committee used standardized questions when interviewing candidates for Holy Orders. A sub-committee worked on the questions, which were adopted by the Committee.

The Standing Committee worked on two property issues this year. First, St. John's, Ketchikan was given permission to proceed with the sale of the Yates and Tobin buildings. Secondly, the Standing Committee worked to resolve the transfer of a missing deed.

With information provided by Canon Suzanne Krull, the Standing Committee approved the giving of Congregational Grants, and authorized Canon Krull to make the appropriate decisions regarding provision of them.

The Standing Committee received regular reports from the Investment Committee, and regular reports on the financial status of the Diocese.

We reviewed applications for Consent to Episcopal Elections from several Dioceses this year, and sent our responses in as required.

A sub-committee was formed to work on the roll-out of the Diocesan Prison Ministry Grant Program.

The Standing Committee made plans for the first in-person Diocesan Convention since 2019! Additionally, plans were made for an in-person Standing Committee Meeting in November.

We accepted the Annual Audit of the Diocesan Finances by an outside, independent agency.

We accepted the proposed 2023 Budget, and the 2023 Clergy Compensation Guidelines, to be presented to the Diocesan Convention Delegates for approval.

The Standing Committee was grateful during this term for the abundant assistance offered by Suzanne Krull as we conducted our business.

Ministry Report

Thank you and God bless you for the ministry that you provide to the Episcopal Diocese of Alaska. Ministry Reports are a way to share your ministry news so we might better understand and appreciate God's work thru this ministry. This report is included in the Diocesan Convention delegate packets and Convention Journal. Ministry Reports received after the deadline may not be included in this year's convention packets! **Please return by 9/14/2022.**

Name: The Rev Betty Groven Committee/Deanery/Ministry: Standing Comm

1. Please highlight the **activities/events and/or projects** of your ministry/committee since last year's convention.

2. Tell us about the **goals** of your ministry for the upcoming year:

3. **Stewardship.**

Do you receive support from the Diocese?

If Yes, are you within budget?

Are you raising additional funds?

Please explain your overall financial situation:

Yes_ ✓	No_ ✓
Yes_ ✓	No_ ✓
Yes_	No_ ✓

4. Please share any other **comments or concerns** that you have regarding your ministry.

If you need more space, please feel free to use additional pages.

Lynnette Winfrey-Frank
Administrative Assistant
Episcopal Diocese of Alaska
907-452-3040 or 1-800-478-3043

Episcopal Diocese of Alaska Ministry Report

Thank you and God bless you for the ministry that you provide to the Episcopal Diocese of Alaska. Ministry Reports are a way to share your ministry news so we might better understand and appreciate God's work thru this ministry. This report is included in the Diocesan Convention delegate packets and Convention Journal. Ministry Reports received after the deadline may not be included in this year's convention packets! **Please return by 9/14/2022.**

Name: Marilyn Duggar Committee/Deanery/Ministry: Commission on Ministry

1. Please highlight the **activities/events and/or projects** of your ministry/committee since last year's convention.

The COM met via zoom at least once a month. We have been working on a clearer more streamlined method of seeking ordination. Also a way to encourage people in the process. We would like to create a tangible and verifiable method of demonstrating required knowledge and preparedness of postulants according to the canons. We currently have 8 postulants. Jake Lambert was ordained to the diaconate this year.

2. Tell us about the **goals** of your ministry for the upcoming year:

I will be leaving the COM this year.

Committee goals are to continue to assist people seeking ordination and

Encourage people, especially in remote areas to consider their own ministry - Both lay and ordination paths. Without these valiant lay ministries our work for the Gospel would flounder.

3. **Stewardship.** Do you receive support from the Diocese? Yes No
If Yes, are you within budget? Yes No
Are you raising additional funds? Yes No

Please explain your overall financial situation:

4. Please share any other **comments or concerns** that you have regarding your ministry.

If you need more space, please feel free to use additional pages.

Episcopal Diocese of Alaska

Ministry Report

Thank you and God bless you for the ministry that you provide to the Episcopal Diocese of Alaska. Ministry Reports are a way to share your ministry news so we might better understand and appreciate God's work thru this ministry. This report is included in the Diocesan Convention delegate packets and Convention Journal. Ministry Reports received after the deadline may not be included in this year's convention packets! **Please return by 9/14/2022.**

Name: Hugh Gellert Committee/Deanery/Ministry: Investment Committee

1. Please highlight the **activities/events and/or projects** of your ministry/committee since last year's convention.

The Investment Committee continues to oversee on behalf of the Standing Committee the securities portfolio of the Diocese and loans to parishes from the Developmental Loan Fund. The Investment Committee stands ready to review new loan requests.

2. Tell us about the **goals** of your ministry for the upcoming year:

The Investment Committee plans to continue in the upcoming year pursuing the following goals:

- Manage the Diocese's investable funds conservatively to achieve a return that exceeds the rate of inflation to contribute to the Diocese's budget;
- Oversee the payment of outstanding loans from the Developmental Loan Fund;
- Help parishes with new loan needs; and
- Explore investments in funds that prioritize securities that are sensitive to Environmental, Social and Governance issues.

3. **Stewardship.**

Do you receive support from the Diocese?	No
If Yes, are you within budget?	Yes No
Are you raising additional funds?	No

Please explain your overall financial situation:

4. Please share any other **comments or concerns** that you have regarding your ministry.

Although the Investment Committee receives no direct financial support from the Diocese we are very grateful to the most valuable support we receive from Canon for Finance and Administration Suzanne Krull. She is vital to the work of the Investment Committee.

If you need more space, please feel free to use additional pages.

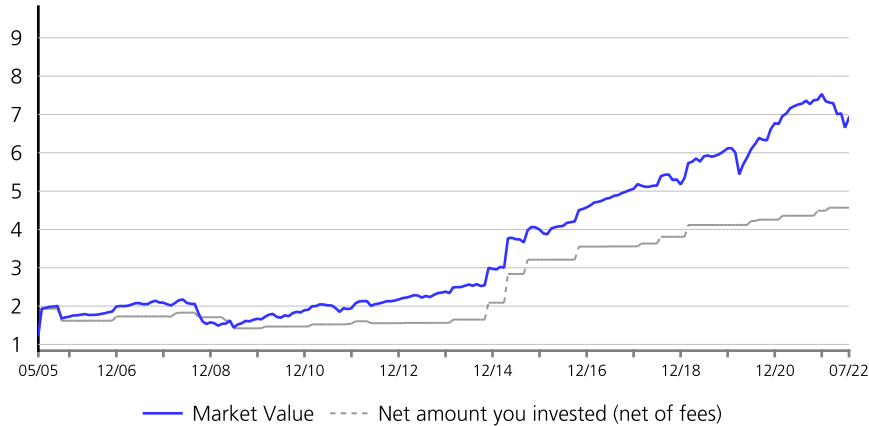


Performance review

as of July 31, 2022

Sources of portfolio value

\$ Millions



Consolidated report prepared for Episcopal Diocese of Alaska

UX XX653 AK Endowment	UX XX110 Training
UX XX656 Distribution	UX XX652 FIT Facility
UX XX651 FIT Endowment	UX XX654 Self Insurance
UX XX655 Dev Loan	UX XX657 Bp Discretion
UX XX902 Travel	

Portfolio value and investment results

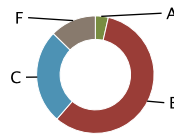
Performance returns (annualized > 1 year)

	YTD 12/31/2021 to 07/31/2022	1 Year 07/31/2021 to 07/31/2022	5 Years 07/31/2017 to 07/31/2022	ITD 05/04/2005 to 07/31/2022
Opening value	7,535,564.00	7,282,818.07	4,877,280.48	1,244,164.58
Net deposits/withdrawals	44,870.86	164,121.43	813,508.42	2,888,276.20
Div./interest income	105,268.46	373,811.53	1,334,828.61	2,538,275.75
Change in accr. interest	0.00	0.00	0.00	0.00
Change in value	-768,106.30	-903,154.01	-108,020.49	246,880.49
Closing value	6,917,597.02	6,917,597.02	6,917,597.02	6,917,597.02
Net Time-weighted ROR	-9.16	-7.65	3.67	4.46

Net deposits and withdrawals include program and account fees.

Asset allocation review

	Value on 07/31/2022 (\$)	% of portfolio
A Cash	246,514.25	3.56
Cash	246,514.25	3.56
B Fixed Income	3,998,540.34	57.80
US	2,933,148.89	42.40
Global	1,065,391.45	15.40
C Equity	1,795,724.59	25.96
US	1,572,423.03	22.73
Global	11,933.00	0.17
International	211,368.56	3.06
D Commodities	0.00	0.00
E Non-Traditional	0.00	0.00
F Other	876,817.84	12.68
Balanced	876,817.84	12.68
Total Portfolio	\$6,917,597.02	100%



Time weighted rates of return (net of fees)

Performance returns (annualized > 1 year)

	YTD 12/31/2021 to 07/31/2022	1 Year 07/31/2021 to 07/31/2022	5 Years 07/31/2017 to 07/31/2022	ITD 05/04/2005 to 07/31/2022
Your portfolio(%)	-9.16	-7.65	3.67	4.46
US Treasury Bill - 3 Mos	0.24	0.26	1.05	1.15
BBG Agg Bond	-8.16	-9.12	1.28	3.37
NASDAQ Composite Index	-20.80	-15.55	14.30	11.27
S&P 500	-12.58	-4.64	12.82	9.74

Balanced mutual funds are allocated in the 'Other' category

Past performance does not guarantee future results and current performance may be lower/higher than past data presented.

Episcopal Diocese of Alaska

Ministry Report

Thank you and God bless you for the ministry that you provide to the Episcopal Diocese of Alaska. As we are holding Convention virtually this year, please note the deadline is earlier than in the past. This is to ensure that we have adequate time to distribute the information prior to the start of convention. Also note, Ministry Reports received after the deadline may not be included in this year's convention packets! Ministry Reports are a way to share your ministry news so we might better understand and appreciate God's work thru this ministry. This report is included in the Diocesan Convention delegate packets and Convention Journal. ***Please return by 9/10/2021.***

Name: Aqqi Hank/Gail Gallahorn Committee/Deanery/Ministry: Senior Warden/Dean at Large

1. Please highlight the **activities/events and/or projects** of your ministry/committee since last year's convention.

Sunday School

Revival during Whaling Season (June 2021)

Volunteers coming in from Minnisota and painted our Church and held Bible Summer School.

Church committee and congregation hold services every Sunday morning.

2. Tell us about the **goals** of your ministry for the upcoming year:

We are waiting on our Arctic Coast Building for over 10 years and plus.

3. **Stewardship.** Do you receive support from the Diocese? Yes_x No_
If Yes, are you within budget? Yes_x No_
Are you raising additional funds? Yes_ No_x

Please explain your overall financial situation:

4. Please share any other **comments or concerns** that you have regarding your ministry.

We have not had a priest for over two years and our Rev. Carrie Oktolik moved out of town due to no housing available. Kivalina is still helping us with Funerals, Marriages, Communion and Baptisms. Special Thanks to Rev: Jerry Norten.

We are in need for a full time priest, vacancy announcement for Point Hope, we don't want our church to close down.

If you need more space, please feel free to use additional pages.

Episcopal Diocese of Alaska

Ministry Report

Name: **South Central Deanery Executive Committee:** The Rev. Katherine Hunt-Dean, Georgia Knazovich-Vice Dean, Maggie McKay-Secretary, The Rev. Gail Loken – Treasurer, Loren Hill- Member at Large, The Rev. Jim Brisson, Member at Large.

Committee/Deanery/Ministry: South Central Deanery Executive Committee

1. Please highlight the **activities/events and/or projects** of your ministry/committee since last year's convention.

Established and Supported “bridge building” Deanery events to bring our communities together as the body of Christ seeking a common mission.

- St. Francis, Kenai – Beach clean-up and fish fry with representatives from five parishes throughout the Deanery.
- Labyrinth awareness through our SCD Newsletter and a St. Augustine sponsored workshop with out of state facilitator.
- Established a SCD Choir with leadership and representation from a variety of churches. The choir will celebrate in a service “Homecoming and Healing” - Honoring our Veterans Event to be held November 9, 2022.
- Restructuring of St. Simeon/St. Anna
- Bi-monthly production of a South Central Deanery Newsletter
- Gathered in a hybrid setting for our 2022 Deanery Meeting with the majority of attendees being in-person. This was a challenging way to hold our Deanery meeting; There was a struggle to meld both in person and virtual attendees. In person attendees celebrated the experience.
- SCD supported Daily morning prayer pod cast led by St. Bartholomew's, Palmer. Recorded our first Clergy SCD Pod-cast at our Annual Deanery Clergy gathering.
- Passed a By-Laws Revision and began discussion regarding the distinction between “standard operating procedure” and “By-Laws.”
- Supported parishes and outreach ministries through grant applications using funds from the Mission and Ministry Grants (Diocesan grants to Deaneries).

Total Disbursement (October 2022 – October 2023): \$4,347

- \$520 Podcast Equipment and development of new ministry – St. Bartholomew's
- \$327 Educational Curriculum and a zoom subscription – Rev. Bob Thwing
- \$500 Bags of Blessing Ministry – St. David's, Wasilla
- \$1500 Latino Ministry Training Event – Christ Church, Anchorage
- \$500 On-Line Bookkeeping Program and Training – St. Bartholomew's, Palmer
- \$1000 Dancing with the Spirit Youth Travel for Music Gathering – St. George, Cordova

2. Tell us about the **goals** of your ministry for the upcoming year:

- Continue to develop a vision with a spiritual base as our focus for the Deanery - casting a “re-imagining the church” throughout the Deanery.
- Continuation of St. Simeon/St. Anna and restructuring within the Deanery.
- Continuation of working on the SCD By-Laws revisions with presentation at our 2023 Annual Deanery meeting.
- Be an Episcopal presence at Mt. Marathon in Seward (July 4th Weekend).
- Deanery Executive Committee – Continue visitation to churches of South Central.
- Expand/lengthen Deanery Meeting to enhance fellowship at our 2023 Annual Meeting.
- Meet in-person for our 2023 South Central Deanery meeting – hosted by St. Francis Kenai
- Through encouragement, personal contact and “PR,” increase attendance to 100% representation at the annual Deanery meeting.
- Expand the newsletter to include more articles from individual churches.
- Executive Committee continue to meet face to face every other month for spiritual growth, connectedness and work sessions.
- Continuous monthly SCD Meetings open to all via zoom. (2nd Wed. of each month)

3. Stewardship.

Do you receive support from the Diocese?

Yes: No:

If Yes, are you within budget?

Yes: No:

Are you raising additional funds?

Yes: No:

Please explain your overall financial situation: We are financial stable

4. Please share any other **comments or concerns** that you have regarding your ministry.

- We are continuing a forward momentum...We are NOT going away!

Respectfully Submitted by The Rev. Katherine Hunt, Dean, in collaboration with The South Central Deanery Executive Committee

Episcopal Diocese of Alaska

Ministry Report

Thank you and God bless you for the ministry that you provide to the Episcopal Diocese of Alaska. Ministry Reports are a way to share your ministry news so we might better understand and appreciate God's work thru this ministry. This report is included in the Diocesan Convention delegate packets and Convention Journal. Ministry Reports received after the deadline may not be included in this year's convention packets! Please return by 9/14/2022.

Name: Dean Robert A Coghill Jr.

Committee/Deanery/Ministry: Southeast Alaska Episcopal Deanery

Please highlight the activities/events and/or projects of your ministry/committee since last year's convention.

- The Southeast Deanery held a third Convocation via Zoom. This is a mixed blessing. It allows people from all churches to attend without the cost and inconvenience of travel BUT we do not have the face to face encounters that are so helpful in understanding one another and developing enthusiasm
- Rev. Lydia Bucklin of the Upper Peninsula was a principal speaker. She spoke of the possibilities for small churches. We in Southeast Alaska share the attribute of small churches.
- Because we met via Zoom the costs of a Convocation are considerably less. In 2021 the Deanery gave a grant to the parishes and in 2022 we excused dues for those wishing to be excused.
- The Deanery granted funds to Saint Brendan's for renovation of the entryway to their church.
- The Deanery granted funds to Church of the Holy Trinity to replace a portion of their alarm system which was no longer functional.
- The Deanery continues to support Godly Play and other youth activities throughout the Deanery.
- A weekly book study group met through the Fall/Winter/Spring. Books studied were on racism, twelve-step programs, aging, climate change and poverty.
- The Executive Committee of the Deanery meets monthly to share ideas and report achievements in mission. We develop a cohesive and supportive mission for our seven parishes.

Tell us about the goals of your ministry for the upcoming year:

- The Southeast Alaska Episcopal Deanery will continue to support one another in our mission to serve God and God's children in our area.
- The Deanery is seeking training regarding the small parishes. We will be looking for training from the Episcopal Church, looking for successful strategies. We want to offer the most meaningful worship and community mission possible in all of our churches.

Stewardship.

Do you receive support from the Diocese? Yes No

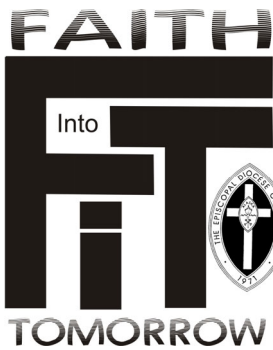
If Yes, are you within budget? Yes No

Are you raising additional funds? Yes No

Please explain your overall financial situation: We receive grants from the Diocese and dues from the churches in the Deanery. We also rely on donations for Convocation housing, food and other expenses.

4. Please share any other comments or concerns that you have regarding your ministry.
 - The Deanery is a community of communities. We all have common missions to our community. We worship similarly. We desire to support one another from our strengths to where there is need in our seven churches.

If you need more space, please feel free to use additional pages.



FAITH INTO TOMORROW – GOOD NEWS ENDOWMENT 2022 ANNUAL REPORT

The **Faith Into Tomorrow – Good News Endowment** is a diocesan endowment fund conceived around 1992 by Bishop Charleston and other diocesan leaders. The **FIT Campaign**, conducted during 1993, appealed to Episcopalians across the state to pledge towards the vision of Bishop Charleston, to establish a fund that would concentrate our efforts towards six specific ministries. The Diocesan Investment Committee oversees the ongoing management of the investment of the endowment funds. The FIT Oversight Committee oversees the distribution of the interest from these funds through grants and operating budget line-item funding.

Membership: The FIT Oversight Committee (OC) consists of eight persons. Two laypersons and two clergy will be elected by the Convention. The Bishop, on recommendation by the FIT OC Chairman, will appoint three at-large members. The Diocesan Canon for Finance and Administration will be an ex-officio member. The elected and appointed members serve 4-year terms.

The current members of the committee are The Rev. Wilson Valentine (Elected Clergy; Juneau), The Rev. Mary Norton (Appointed; Kotzebue), Bella Schjenken (Elected Lay, Anchorage), Charlotte White (Appointed; Nenana), Maggie McKay (Elected Lay, Anchorage), The Rev. Julie Platson, acting Chair (Elected Clergy; Sitka), vacant seat (Appointed), and ex officio Suzanne Krull (Staff Liaison).

The committee held four evening meetings in 2022 by Zoom and longer multi-day Zoom meeting, November 6 and 7, 2021. The November meeting was changed from in-person to Zoom due to COVID-19.

The following 2019 & 2020 grant awards were granted extension due to delayed activities/events cause by COVID-19: (2019) Case 4 St. Luke’s, Shageluk: Kid’s Church, (2019) Case 6 St. Peter’s, Sitka: Women in the Church Concert, (2019) Case 6 St. Bartholomew’s, Palmer: Youth & Family Outreach, (2019) Case 6 Holy Trinity, Juneau: Faith of Place, (2020) Case 4 St Mary’s, Anchorage: Children’s Christian Formation (partial extension).

Grants Distributed – December 2021 and 2022

Case 2A – Facility Emergency Repair and Replacement		
Church or Group	Program Name	Amount Awarded
St. Christopher’s, Anchorage	Broken pipes, flooding basement	\$10,000 Grant
St. Matthew’s, Fairbanks	Asbestos abatement, water leakage	\$10,000 Grant

Case 2B – Traveling Work Team Support		
Church or Group	Program Name	Amount Awarded
St. Francis-by-the-Sea	Ground Clean-up	\$500 Grant

2020 Case 4 – Youth Ministry Amount available and awarded - \$8,352		
Church or Group	Program Name	Amount Awarded
Dancing with the Spirit -EDA	Gospel Music Curriculum	\$5,000
Christ Church, Anchorage	Fostering Comfort & Care	\$2,500
St. James, Tanana	Warm Hands Warm Hearts	\$852

2020 Case 5 – Caring for Victims of Poverty and Abuse Amount available and awarded - \$8,404		
Church or Group	Program Name	Amount Awarded
St. John's, Ketchikan	The Lord's Table	\$1,264.10
St. George's, Kotzebue	Cudd Hall Community Kitchen	\$3,874.90
St. Francis, Kenai	Sleeping Bags for Homeless	\$1,000
St. Philip's, Wrangell	Food Mail Box	\$1,000
Beans Café, Anchorage	Direct Services – ID Services	\$1,265

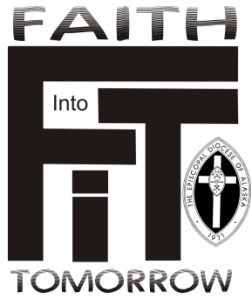
Case 6 – Encouraging Spiritual Growth or Outreach Amount available - \$2,966, amount awarded \$1,099		
Church or Group	Program Name	Amount Awarded
St. George's, Kotzebue	Digital Outreach Project	\$1,099

The deadline for Case 4, Case 5 and Case 6 applications is October 11, 2022. Awards will be announced by December.

For more information about the Faith Into Tomorrow Endowment, F.I.T. ministries or its Oversight Committee, please contact any of the F.I.T. committee members.

In His service,

The Rev Julie Platson, Acting Chair



*Faith Into Tomorrow Endowment
Episcopal Diocese of Alaska
1205 Denali Way
Fairbanks AK 99701*

Grant Reporting Case 2A – Facility Emergency Repair and Replacement

To all grant recipients: St. Christopher’s Episcopal Church, Anchorage

We are blessed to be able to provide the grant funding for your application. As stated in your award letter we do require reporting, due prior to this year’s convention. Failure to return the completed report by the deadline may jeopardize future grant awards. Funds must be spent/used within 12 months of receipt. All unused/unspent funds not used for the specific award must be returned.

Report deadline: **September 1, 2022**. Please answer the following questions and submit to the Episcopal Diocese of Alaska, 1205 Denali Way, Fairbanks, AK 99701; Attn: FIT Reporting or via email: skrull@gci.net. Although not required, photos are welcome. Please limit entire reporting to no more than (2) pages.

1) What work was done?

Rehabilitate the damage done by the flooding of our first floor to the tune of \$65,000+.

Fire department and restoration services had to come in and dry the floors.

The carpet was destroyed along with subfloor, drywall damaged beyond repair, window wall heavily damaged and had to be replaced.

Asbestos was discovered and had to be dealt with.

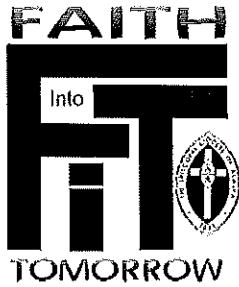
The bathrooms were damaged and needed remodeling.

2) How was the money spent?

Extra cost of replacing flooring with Wood.	\$5,981.30
Insurance Deductible	\$1,000.00
Lost Church rental	<u>\$5,000.00</u>
Total	\$11,981.30

3) Suggestions for improving the grant/loan process:

We are very appreciative of the FIT Grant. Without it we would have had a hard time recovering from the damage.



*Faith Into Tomorrow Endowment
Episcopal Diocese of Alaska
1205 Denali Way
Fairbanks AK 99701*

**Grant Reporting
Case 2A – Facility Emergency Repair and Replacement**

To all grant recipients: St. Matthew's Episcopal Church, Fairbanks

We are blessed to be able to provide the grant funding for your application. As stated in your award letter we do require reporting, due prior to this year's convention. Failure to return the completed report by the deadline may jeopardize future grant awards. Funds must be spent/used within 12 months of receipt. All unused/unspent funds not used for the specific award must be returned.

Report deadline: **September 1, 2022**. Please answer the following questions and submit to the Episcopal Diocese of Alaska, 1205 Denali Way, Fairbanks, AK 99701; Attn: FIT Reporting or via email: skrull@gci.net. Although not required, photos are welcome. Please limit entire reporting to no more than (2) pages.

1) What work was done?

Asbestos was abated in the Parish Hall roof ceiling.

2) How was the money spent?

Asbestos abatement to a contractor

3) Suggestions for improving the grant/loan process:

For Loans only:

What is the outstanding balance of the loan, to date? _____

Case 2B – Traveling Work Team Support

St. Francis by the Sea

1. Team members arrived starting on Friday evening, August 6, 2022 and departed on Sunday, August 8th after morning service.
2. The team ended be comprised of 24 members.
3. On Saturday August 6th we walked and cleaned the beach at the mouth of the Kenai River on the south side where there had be dipnetting for the previous 3 weeks in July. This covered approximately 1 mile of beach. We removed about 1 bag worth of trash and a tent that was partly buried in the sand along with some PVC piping that had been driven into the sand.

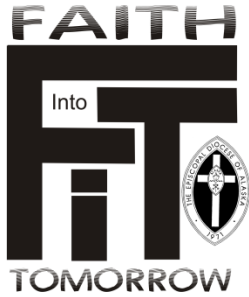
Following this we had a Fish fry with some fish that had been donated from dipnetting.

This was followed with an Evening Prayer Service held at St. Francis, led by Adam Lee.

4. The funds spent covered supplies for beach cleanup, Supplies for the Fish Fry and lodging expenses 2 nights for a member of the team.
5. This was a successful gathering of the South Central Deanery. The goal of this gathering was to bring together parishioners of the deanery for fellowship.

Respectively submitted,

Loren Hill, Senior Warden



*Faith Into Tomorrow Endowment
Episcopal Diocese of Alaska
1205 Denali Way
Fairbanks AK 99701*

Grant Reporting Case 4 – Youth Ministries

To all grant recipients:

We are blessed to be able to provide the grant funding for your application. As stated in your award letter we do require reporting, due prior to next year's convention. Failure to return the completed report by the deadline may jeopardize future grant awards. Funds must be spent/used within 12 months of receipt. All unused/unspent funds not used for the specific award must be returned.

Report deadline: **September 1, 2022**. Please answer the following questions and submit to the Episcopal Diocese of Alaska, 1205 Denali Way, Fairbanks, AK 99701; Attn: FIT Reporting. Although not required, photos are welcome. Please limit entire reporting to no more than (3) pages.

Date: September 1, 2022

Name of Program: Fostering Comfort and Care

Name of Church: Christ Church Episcopal, Anchorage, Alaska

1) Describe the program the grant helped fund? (share your story)

This program is Phase II of our Fostering Comfort and Care Ministry. This grant provides funding for the development, production and assembly of Comfort and Care bags for those in foster care and for marginalized/vulnerable families in need.



The Comfort and Care bags consist of a customized backpack that includes basic infant clothing (hats, onesie body suits, socks, bibs), burp cloths, blankets, disposable diapers, wipes, sacks (for containing soiled diapers), a padded, waterproof drawstring changing pad, teething toys, and hand sanitizer for the child's parent(s).



An outside entity has donated a generous supply of Beanie Babies to enclose in the Comfort and Care backpacks as “lovies.” These toys will be carefully sorted to ensure construction safety and security (e.g., eyes and tags) before sharing them with infants and toddlers.



Everything included in the Comfort and Care bags are either handmade from new materials or purchased new.

2) How did your program impact your youth? Your youth ministry?

This program directly impacted youth by providing resources to vulnerable/marginalized families. Due to Covid-19 restrictions, our youth group has not been directly involved. However, they are very much aware of this ministry through church bulletins, flyers, church attendance, and Zoom meetings. Our rector has also incorporated the message of community outreach with emphasis on the ministries supported through our Comfort and Care Programs in sermons, newsletters and announcements.

3) How do you see God's work/purpose in this program?

This program not only serves the marginalized/vulnerable families in need, but it has provided a focus point for our community to gather and grow, providing opportunities for people of all ages and abilities to be involved in the outreach of this ministry. It is a collaborative, supportive program that has definite potential for growth. Volunteers from within Christ Church and the Anchorage community join together to research need and plan projects. This program has expanded beyond the walls of Christ Church with a weekly gathering and participants from both the parish and broader community, even beyond Anchorage. It also serves and supports pastoral care emergencies encountered by our lay and ordained ministers.

By design, the backpacks and circular cinch sacks are easily constructed. Even those with no or limited sewing skills are involved in supply coordination, fabric selection, cutting, inserting drawstrings, etc. Those of our group who can sew assist others and complete the items, either during our Tuesday gatherings or at home. We fill the backpacks and cinch sacks in community, praying for the families who will receive them.

Truly I tell you, whatever you did for one of the least of these brothers and sisters of mine, you did for me.

Matthew 25:40

4) How were the funds spent?

Funds were spent on procuring materials and supplies for our Comfort and Care bags, as outlined in the following spreadsheet:

**Fostering Comfort and Care: Baby/Infant Program
Christ Church Episcopal**

Item Description	Vendor	Quantity	Unit Price	Total Cost
Supplies for Making 25 Circular Cinch Sacks:				
• Polyurethane Laminate Waterproof Fabric (PUL)	Jo-Ann Fabrics	25 yards	14.99/yard	374.75
• Cotton Fabric for Outside of Cinch Sacks	Jo-Ann Fabrics	31.25 yards (1.25 yards/sack)	6.99/yard	218.44
• Fusible Webb	Jo-Ann Fabrics	20 yards	2.47/yard	49.40
• Double-Faced Pre-Quilted Cotton Fabric (for burp cloths)	Jo-Ann Fabrics	9 yards	14.99/yard	134.91
• Flannel Fabric (for receiving blankets)	Jo-Ann Fabrics	25 yards	6.99/yard	174.75
• Drawstring Cord (4mm)	Jo-Ann Fabrics	2 bundles	38.49	78.96
• Cord Stops/Locks	Jo-Ann Fabrics	3 pkgs	37.99	113.97
• 100% Cotton Batting	Jo-Ann Fabrics	2 pkgs	38.27	76.54
• Sew-On Velcro Tape, 2" wide	Jo-Ann Fabrics	2 yards	9.99	19.98
Supplies for Making 25 Backpacks:				
• Canvas fabric for backpack exterior	Jo-Ann Fabrics	20 yards	12.99	259.80
• Canvas fabric for backpack straps and ties	Jo-Ann Fabrics	7 yards	12.99	90.93
• Cotton fabric for backpack lining	Jo-Ann Fabrics	20 yards	6.49	129.80
Thread for Constructing Cinch Sacks and Backpacks (sewing machine and serger)	Jo-Ann Fabrics	8 500-meter spools 4 2500-meter spools	6.49 each 7.99 each	51.92 31.96
Disposable Diapers sizes newborn to toddler, customized per individual need	Costco	5 boxes	34.99	174.95
Baby Wipes (Multipurpose: Face, Hand, Body, & Nose)	Amazon	10 6-packs (20 wipes/pack)	11.98	119.80
Disposable Diaper Sacks (for containing soiled diapers)	Amazon	3 (200 count)	6.57	19.53
Hand Sanitizer (2-oz bottles)	Fred Meyer	25	2.98	74.50
Onesies Bodysuits: sizes newborn to toddler)	Amazon	12 (pkgs of 8)	15.88	190.56
Baby Grow & Fit Flex Zones Cotton Stretch Socks	Amazon	2 of each (14 pack) 0-6 months 6-12 months 12-24 months	15.99	95.94
Baby Bibs	Amazon	7 (pkgs of 12)	16.99	118.93
Baby Beanie Pull-On Hats: 0-6 months & 6-24 months sizes	Amazon	9 (pkgs of 8)	13.99	125.91
Teether toys	Amazon	5 (pkgs of 10)	22.99	114.95
			Total Expenses:	\$2841.18
			Fit Grant Award:	2500.00
			Private Donation:	341.18

Through the labor of love and donated time, talent, and treasures from volunteers, we have absorbed some of the additional cost in the production of our project.

5) Suggestions for improving the grant process or other comments including Thank-you or recognition of key people/organizations:

Christ Church Episcopal expresses sincere thanks to the Diocese of Alaska and the Faith Into Tomorrow Committee for their support. With this support and encouragement, "Fostering Comfort and Care" is a success!



Faith Into Tomorrow Endowment
Episcopal Diocese of Alaska
1205 Denali Way
Fairbanks AK 99701

Grant Reporting
Case 5 – Caring for Victims of Poverty and Abuse

To all grant recipients:

We are blessed to be able to provide the grant funding for your application. As stated in your award letter we do require reporting, due prior to next year's convention. Failure to return the completed reporting form by the deadline may jeopardize future grant awards. Funds must be spent/used within 12 months of receipt. All unused/unspent funds not used for the specific award must be returned.

Report deadline: **September 1, 2022**. Please answer the following questions and submit to the Episcopal Diocese of Alaska, 1205 Denali Way, Fairbanks, AK 99701; Attn: FIT Reporting. Although not required, photos are welcome. Please limit entire reporting to no more than (3) pages.

Date: 8-2
Name of Program: Lord's Table
Name of Church/Organization: St. John's Episcopal - Ketchikan

- 1) Describe the program the grant helped fund? (share your story) *St. John's serves the homeless every Sunday of the month. When we were able to serve a sit down meal we used our china silverware and treated them as family. We usually have enough for →*
- 2) How did your program impact your church? Your community?
Our church serves the homeless on the average of 45 people, we have at least 6 workers that volunteer their time & talents!
- 3) How do you see God's work/purpose in this program?
This is a blessing to both the workers and the homeless. The workers feel fortunate that they can do this and the homeless are happy because we don't judge them.
- 4) How were the funds spent?
The funds were spent on food. The meals consist of meats, rice/potatoes, casseroles, salads, vegetables, →
- 5) Suggestions for improving the grant process or other comments including Thank-you or recognition of key people/organizations
More space to fill the Report out! ;)

Thanks go to all who help cook & serve the homeless. Mostly to Dick Miller for being in charge of keeping things organized, ordering supplies and taking care of any →

1. seconds and enough to take away a meal that can't come in person. Unfortunately, because of Covid we have had to give them a take away meal & drink. They are very thankful, especially for homemade meal. We hope to be able to go back to serving in person soon.

4. Home made rolls & desserts. In the winter we take up a collection of socks & give each one 2 pairs of brand new socks.

We also put out toothbrushes, toothpaste, shampoos & soaps.

Also if we have warm jackets etc that we don't use they are put on a table for people to help themselves.

5. problems that arise, shopping etc. He is a blessing to St. John's.

Also many thanks for giving us this grant. You are a blessing to all who received the grant.

Blessings, Lynn Clay
Senior Warden

2021 Faith into Tomorrow grant

Case 5 – Caring for Victims of Poverty and Abuse

Cudd Hall – Community Kitchen, St. Georges-in-the-Arctic, Kotzebue

\$3,874.90

Report to Diocesan Convention, September 1, 2022

Program: We were blessed to receive a 2021 FIT grant for our program Cudd Hall – Community Kitchen. Cudd Hall is the parish hall for St. George’s-in-the-Arctic and is also used by the community for many events ranging from birthday parties and other celebrations to fund-raising, Give-Aways, and meetings. For some years now we have sponsored a Sunday afternoon hot meal for folks who are homeless, hungry, lonely, or just want to come. After briefly stopping the program after the Covid 19 pandemic hit, we began operating on a take-out only basis. We currently serving 40 to 50 meals each Sunday. All costs for the program are covered by donations or grants.

Impact: We have a small congregation, with a pre-pandemic average Sunday attendance of 10. The Sunday Community Kitchen has been a good focus for outreach efforts, something we can accomplish without great numbers. Different members of the congregation contribute or help prepare the meal each week and get to experience the joy that comes with serving others. The appreciation expressed by those receiving food, at the door or around the community, shows that we are having a positive impact. In addition, other organizations around town have not only donated to our program but have also gotten grant money to provide a similar service on weekdays, also operating out of Cudd Hall.

God at work: Caring for victims of poverty and other needs is definitely part of God’s plan for us. We also include copies of our Sunday lectionary with the meals, helping to get God’s word out to people who may not attend a church. Now that pandemic restrictions have eased, we are also to visit with people a bit more. I see the many blessings our church has received, even during the pandemic, as evidence that God is with us in this endeavor.

Funds spent: Grant funds have been spent primarily on take-out containers, covered cups for soup, plastic silverware, fresh produce, and the odd item(s) to complete a recipe. We have been blessed with many donations of items from local stores, hunters and fishers, organizations in town to work for a time and not wanting to ship out their surplus food, people cleaning their pantries, and others who just want to help. In so many ways, the FIT grant has been a seed that has encouraged others and grown into much more than that original \$3,874.90.

Many thanks to the FIT Committee and the Episcopal Diocese of Alaska for this grant; to A.C. Company, Northstar Market, NIHA, City of Kotzebue, hunters, fishers, workers, and other individuals who have donated food or time to help prepare and serve food; and special thanks to Brad, Mary, and Ella, who prepared and sent in our grant application in the first place, and Sophie, who started us on this path a long time ago.



Faith Into Tomorrow Endowment
Episcopal Diocese of Alaska
1205 Denali Way
Fairbanks AK 99701

Grant Reporting Case 5 – Caring for Victims of Poverty and Abuse

To all grant recipients:

We are blessed to be able to provide the grant funding for your application. As stated in your award letter we do require reporting, due prior to next year's convention. Failure to return the completed reporting form by the deadline may jeopardize future grant awards. Funds must be spent/used within 12 months of receipt. All unused/unspent funds not used for the specific award must be returned.

Report deadline: **September 1, 2022**. Please answer the following questions and submit to the Episcopal Diocese of Alaska, 1205 Denali Way, Fairbanks, AK 99701; Attn: FIT Reporting. Although not required, photos are welcome. Please limit entire reporting to no more than (3) pages.

Date: 3/21/22

Name of Program: Mailbox Food

Name of Church/Organization: St. Philip's Episcopal Church, Wrangell

- 1) Describe the program the grant helped fund? (share your story)

FIT helped by supplying funds for our Mailbox Food. Some of the money was also used to buy food for the Senior Apartments.

- 2) How did your program impact your church? Your community?

The program kept our church more aware of food insufficiency in Wrangell and our responsibility to address it in a small way. The Mailbox is located on a path beside the church and is visible to those using the path, ~~one~~ many of whom probably don't own cars and thus may be in need. A group of volunteers helped with distribution.

- 3) How do you see God's work/purpose in this program?

We are challenged as God's people to help the needy and this program has helped especially during the winter months.

- 4) How were the funds spent?

The funds were spent on non-perishable food. The mailbox was filled twice a week. Once a week a box of food was taken to the Senior Apartments where anyone could help themselves.

- 5) Suggestions for improving the grant process or other comments including Thank-you or recognition of key people/organizations

St. Philip's is grateful to the FIT committee for funding this effort two times. We think the grant process works well and have no suggestions for improvement.

2021 Faith into Tomorrow grant

Case 6 - Encouraging Spiritual Growth and Outreach

Digital Outreach Project, St. George's-in-the-Arctic, Kotzebue

\$1,099.00

Report to Diocesan Convention, September 1, 2022

Program: St. George's-in-the-Arctic has been live-streaming our Sunday morning service on Facebook Live since late spring, 2020, using a cell phone. We hope through this grant to upgrade to a better camera and sound system to improve the delivery of our service.

Impact: Our Facebook Live services have continued to be well-received by church members, with many tuning in when out of town or unable to attend in person for other reasons. We have some community members who have become regular online attendees, as well as quite a few from elsewhere in Alaska or other states. Some folks attend other churches also, and others haven't stepped through the doors of a religious institution for many years. Our online presence shows that we are alive and busy with God's work, as well as sharing the Good News beyond our doors.

God at work: Spreading the Gospel is God's work, and it is exciting to be a part of it in this way. We hope that this new equipment will improve our online offering, and that equipment to improve the sound quality of our productions will also support in-person worship, especially for our elders.

Funds spent: Due to busy schedules, travels, pandemic complications, and all manner of excuses, we have not yet spent the funds. We plan to consult a recommended "expert" soon, and then purchase the equipment. If we have not used the grant by the end of the year, we will return the funds to the FIT program.

Thanks in advance to the recommended "expert" for your suggestions and expertise; thanks to Brad for the initial research and grant application; and thanks especially to the FIT Committee and the Episcopal Diocese of Alaska for this grant, and for having deadlines that push us into getting things done.

DANCING WITH THE SPIRIT ACCOMPLISHMENTS 2022

<https://www.dancingwiththespirit.org>

Dancing with the Spirit is a program that teaches guitar, fiddle, mandolin, ukulele, singing, and dancing to students in villages—operating out of the Episcopal Diocese of Alaska office. It is funded by schools, tribal councils, and individual contributions. We have an 10 member Board of Directors and elected officers who guide the program and have developed our mission statement. “Dancing with the Spirit connects youth and elders through school music programs and camps--promoting spiritual, physical, and mental wellness with the joy, love and hope of music. Our goal is to prevent suicide, drug, alcohol, and domestic abuse by building self-esteem, preserving musical traditions, and encouraging strong healthy communities.”

1. Over the past sixteen years, we have traveled to 55 villages--plus reached out to the Native communities in Fairbanks, Juneau, Kodiak, Cordova, and Anchorage with music camps. Villages are Alaganuk, Allakaket, Angoon, Anvik, Arctic Village, Beaver, Chalkyitsik, Chenega, Circle, Coffman Cove, Eagle, Emmonak, Fort Yukon, Galena, Grayling, Hollis, Holycross, Hooper Bay, Hughes, Huslia, Hydaburg, Hyder, Kaltag, Kasaan, Kivalina, Kokohanok, Kotzebue, Koyukuk, McGrath, Manley Hot Springs, Mentasta Lake, Minto, Naukati, Nikolai, Northway, Nuiqsut, Nulato, Pelican, Point Hope, Port Alexander, Rampart, Ruby, Scammon Bay, Shageluk, Stevens Village, Tanacross, Tanana, Tetlin, Thorne Bay, Tok, Tyonek, Unalakleet, Venetie, Whale Pass, and Yakutat.
2. Last spring we were able to get back to traveling and spent 15 weeks in TCC villages leading 14 music weeks—expanding our staff to focus more on culture and healthy living and hiring many more Native staff from the villages .
3. In August, we traveled to the Midway Music Festival in Canada’s Northwest Territories with 11 Gwich’in youth and 6 fluent speaking Gwich’in adults/elders from the Yukon Flats plus the Rev. Catherine Amy Kropp and myself to lead a music camp, perform on stage, play music for 2 Anglican church services, practice speaking Gwich’in, and dancing—as a way to build young leaders to carry on Gwich’in culture, language, music and dancing.
4. Our curriculum (Volume 1, 2 (finished this spring), and Holiday videos, songbooks, fiddle tab) is available for free for downloading on our webpage <https://www.dancingwiththespirit.org> We’ve also loaded our curriculum on jump drives for students, teachers, families, and musicians including songs in Gwich’in, Han Gwich’in, Deg Xinag, and Koyukon. .
5. This spring and summer we hired 34 members of the Native community (28 fluent speakers) in addition to 8 non-Natives. And earlier, during the pandemic we hired 22 of these part-time musicians to help with our virtual curriculum.
6. We have led virtual music lessons occasionally over the past two years for Tanana, Hughes, Beaver, Takotna, Anvik, McGrath and Chalkyitsik.
7. A Gwich’in Dance Social Studies Curriculum will be available later this fall that involves footage/info from dances in Venetie, Fort Yukon, and Arctic Village.
8. Received \$4200 from the St. Matthews Endowment Fund and a \$1000 Southcentral Deanery grant plus \$4000 from a GoFundMe for the Midway Music Festival Trip; a \$5000 FIT Grant towards a Gospel Music Curriculum; \$2000 from the Episcopal Diocese of Alaska; \$43,000 from FY2022 TCC Wellness Funds for village travel and distance music lessons; \$1000 from the International Bluegrass Foundation’s Arnold Shultz Fund to record bluegrass song videos; \$9,200 from the Iditarod School District for Music Weeks in Anvik and McGrath; \$52,880 from the Yukon Flats School District for Music and Culture Weeks in Arctic Village, Beaver, Circle (flooded out but our staff traveled there), Chalkyitsik, Fort Yukon, and Venetie; and \$75,443 from the Yukon Koyukuk School District for Music and Culture Weeks in Allakaket, Hughes, Huslia, Kaltag, Koyukuk, Nulato, and Minto—plus occasional individual donations.

9. Received a \$64,650 RurAL CAP Foundation grant primarily for instruments for the villages, plus song videos, music curriculum, and distance lessons with the villages.
10. Updated our Dancing with the Spirit website with more pictures and information.
11. Nominated the Rev. Dr. Trimble Gilbert for a National Heritage Fellowship.
12. Continued to give out a two CD set *Rev. Trimble Gilbert Sings Takudh Hymns*--plus an all Gwich'in CD recorded by Beaver students
13. Continued work on a Gospel Guitar Songbook/Play Along CD and recorded more gospel song videos for a website gospel section which we hope to finish this fall
14. We are hosting a Music Instructor Training in person in Fairbanks and on Zoom September 25th to raise up more leaders.
15. We are looking for solid funding (and have begun work on setting up an endowment fund) to be able to hire several full-time staff so our program can continue long into the future!

2021 Parochial Report Information

In 2021 Parochial Reports were filed for all 48 churches.

Thank you for your hard work in completing the Parochial Report!!!

All the pages have the same information, just different sorts

<u>Sort by:</u>	<u>Page #</u>
Alphabetical by City/Town/Village	1
Operating Income per Member in Good Standing	2
Active Baptized Member	3
Member in Good Standing	4
Average Attendance	5
2021 vs 2020, sorted by Deanery	6-7
2021 vs 2020 Membership & Income Charts	8-9

**Episcopal Diocese of Alaska
2021 Parochial Report
Data Sorted
Alphabetically**

Deanery	City	Congregation Name	Active Baptized Members	Members in Good Standing	Average attendance	Operating Income Per			
						Total Operating Income	Baptized Member	Member in Good Standing	Average attendee
Interior	Allakaket	St Johns in the Wilderness	137	135	1	\$252	\$1.84	\$1.87	\$252.00
S. Central	Anchorage	All Saints	222	96	30	\$258,328	\$1,163.64	\$2,690.92	\$8,610.93
S. Central	Anchorage	Christ Church	85	83	27	\$157,056	\$1,847.72	\$1,892.24	\$5,816.89
S. Central	Anchorage	St Christophers	32	30	30	\$19,690	\$615.31	\$656.33	\$656.33
S. Central	Anchorage	St Marys	753	712	11	\$1,036,522	\$1,376.52	\$1,455.79	\$94,229.27
Interior	Anvik	Christ Church	87	87	10	\$1	\$0.01	\$0.01	\$0.10
Interior	Arctic Village	Bishop Rowe Chapel	141	60	0	\$2,000	\$14.18	\$33.33	\$0.00
Interior	Beaver	St Matthews	83	2	4	\$1,912	\$23.04	\$956.00	\$478.00
Interior	Birch Creek	St Peters	25	0	0	\$0	\$0.00	\$0.00	\$0.00
Interior	Chalkyitsik	St Timothys	75	10	8	\$3,639	\$48.52	\$363.90	\$454.88
Interior	Circle	Holy Trinity	78	65	10	\$740	\$9.49	\$11.38	\$74.00
S. Central	Cordova	St Georges	71	69	11	\$25,308	\$356.45	\$366.78	\$2,300.73
Interior	Eagle	St Johns	20	10	6	\$0	\$0.00	\$0.00	\$0.00
S. Central	Eagle River	Holy Spirit	66	55	23	\$96,151	\$1,456.83	\$1,748.20	\$4,180.48
Interior	Fairbanks	St Matthews	1,088	720	50	\$327,835	\$301.32	\$455.33	\$6,556.70
Interior	Fort Yukon	St Stephens	202	105	23	\$6,922	\$34.27	\$65.92	\$300.96
Interior	Grayling	St Pauls	260	235	5	\$0	\$0.00	\$0.00	\$0.00
South East	Haines	St Michael & All Angels	51	51	15	\$14,833	\$290.84	\$290.84	\$988.87
S. Central	Homer	St Augustines	8	8	5	\$17,019	\$2,127.38	\$2,127.38	\$3,403.80
Interior	Hughes	St Pauls	54	27	6	\$0	\$0.00	\$0.00	\$0.00
Interior	Huslia	Good Shepherd Mission	126	11	11	\$1,415	\$11.23	\$128.64	\$128.64
South East	Juneau	Holy Trinity	128	128	42	\$225,974	\$1,765.42	\$1,765.42	\$5,380.33
South East	Juneau	St Brendan	60	57	21	\$109,229	\$1,820.48	\$1,916.30	\$5,201.38
S. Central	Kenai	St Francis by the Sea	20	10	8	\$26,255	\$1,312.75	\$2,625.50	\$3,281.88
South East	Ketchikan	St Johns	45	45	29	\$71,662	\$1,592.49	\$1,592.49	\$2,471.10
Arctic Coast	Kivalina	Kivalina Epiphany	408	31	401	\$58,084	\$142.36	\$1,873.68	\$144.85
S. Central	Kodiak	St James the Fisherman	65	50	13	\$93,965	\$1,445.62	\$1,879.30	\$7,228.08
Arctic Coast	Kotzebue	St Georges in the Arctic	42	22	4	\$29,294	\$697.48	\$1,331.55	\$7,323.50
Interior	Minto	St Barnabas	40	40	11	\$14,000	\$350.00	\$350.00	\$1,272.73
Interior	Nenana	St Marks	123	0	9	\$16,392	\$133.27	\$0.00	\$1,821.33
Arctic Coast	Noatak	Episcopal Congregation	10	0	0	\$0	\$0.00	\$0.00	\$0.00
Interior	North Pole	St Judes	25	12	11	\$29,875	\$1,195.00	\$2,489.58	\$2,715.91
S. Central	Palmer	St Bartholomews	26	26	11	\$53,900	\$2,073.08	\$2,073.08	\$4,900.00
South East	Petersburg	St Andrews	11	11	1	\$16,069	\$1,460.82	\$1,460.82	\$16,069.00
Arctic Coast	Point Hope	St Thomas	287	280	20	\$40,396	\$140.75	\$144.27	\$2,019.80
Arctic Coast	Point Lay	St Albans in the Arctic	59	5	5	\$0	\$0.00	\$0.00	\$0.00
Interior	Rampart	Episcopal Congregation	54	40	6	\$0	\$0.00	\$0.00	\$0.00
S. Central	Seward	St Peters	4	4	5	\$32,286	\$8,071.50	\$8,071.50	\$6,457.20
Interior	Shageluk	St Lukes	117	117	3	\$200	\$1.71	\$1.71	\$66.67
South East	Sitka	St Peters by the Sea	99	96	15	\$148,329	\$1,498.27	\$1,545.09	\$9,888.60
Interior	Stevens Village	St Andrews	41	5	5	\$0	\$0.00	\$0.00	\$0.00
S. Central	Talkeetna	Denali Episcopal	9	9	7	\$880	\$97.78	\$97.78	\$125.71
Interior	Tanacross	St Timothys	94	70	15	\$0	\$0.00	\$0.00	\$0.00
Interior	Tanana	St James	132	43	10	\$3,946	\$29.89	\$91.77	\$394.60
S. Central	Valdez	Epiphany Lutheran/Episcopal	110	107	11	\$103,553	\$941.39	\$967.79	\$9,413.91
Interior	Venetie	Good Shepherd	201	9	4	\$4,678	\$23.27	\$519.78	\$1,169.50
S. Central	Wasilla	St Davids	78	65	5	\$61,581	\$789.50	\$947.40	\$12,316.20
South East	Wrangell	St Philips	33	31	5	\$50,992	\$1,545.21	\$1,644.90	\$10,198.40
		Total for the Entire Diocese	5,985	3,884	963	\$3,161,163	\$528.18	\$813.89	\$3,282.62
		Average for the Entire Diocese	125	81	20	\$65,858	\$766.80	\$971.55	\$4,964.44

**Episcopal Diocese of Alaska
2021 Parochial Report
Data Sorted by
Operating Income Per Member in Good Standing**

Deanery	City	Congregation Name	Active Baptized Members	Members in Good Standing	Average attendance	Operating Income Per			
						Total Operating Income	Baptized Member	Member in Good Standing	Average attendee
S. Central	Seward	St Peters	4	4	5	\$32,286	\$8,071.50	\$8,071.50	\$6,457.20
S. Central	Anchorage	All Saints	222	96	30	\$258,328	\$1,163.64	\$2,690.92	\$8,610.93
S. Central	Kenai	St Francis by the Sea	20	10	8	\$26,255	\$1,312.75	\$2,625.50	\$3,281.88
Interior	North Pole	St Judes	25	12	11	\$29,875	\$1,195.00	\$2,489.58	\$2,715.91
S. Central	Homer	St Augustines	8	8	5	\$17,019	\$2,127.38	\$2,127.38	\$3,403.80
S. Central	Palmer	St Bartholomews	26	26	11	\$53,900	\$2,073.08	\$2,073.08	\$4,900.00
South East	Juneau	St Brendan	60	57	21	\$109,229	\$1,820.48	\$1,916.30	\$5,201.38
S. Central	Anchorage	Christ Church	85	83	27	\$157,056	\$1,847.72	\$1,892.24	\$5,816.89
S. Central	Kodiak	St James the Fisherman	65	50	13	\$93,965	\$1,445.62	\$1,879.30	\$7,228.08
Arctic Coast	Kivalina	Kivalina Epiphany	408	31	401	\$58,084	\$142.36	\$1,873.68	\$144.85
South East	Juneau	Holy Trinity	128	128	42	\$225,974	\$1,765.42	\$1,765.42	\$5,380.33
S. Central	Eagle River	Holy Spirit	66	55	23	\$96,151	\$1,456.83	\$1,748.20	\$4,180.48
South East	Wrangell	St Philips	33	31	5	\$50,992	\$1,545.21	\$1,644.90	\$10,198.40
South East	Ketchikan	St Johns	45	45	29	\$71,662	\$1,592.49	\$1,592.49	\$2,471.10
South East	Sitka	St Peters by the Sea	99	96	15	\$148,329	\$1,498.27	\$1,545.09	\$9,888.60
South East	Petersburg	St Andrews	11	11	1	\$16,069	\$1,460.82	\$1,460.82	\$16,069.00
S. Central	Anchorage	St Marys	753	712	11	\$1,036,522	\$1,376.52	\$1,455.79	\$94,229.27
Arctic Coast	Kotzebue	St Georges in the Arctic	42	22	4	\$29,294	\$697.48	\$1,331.55	\$7,323.50
S. Central	Valdez	Epiphany Lutheran/Episcopal	110	107	11	\$103,553	\$941.39	\$967.79	\$9,413.91
Interior	Beaver	St Matthews	83	2	4	\$1,912	\$23.04	\$956.00	\$478.00
S. Central	Wasilla	St Davids	78	65	5	\$61,581	\$789.50	\$947.40	\$12,316.20
S. Central	Anchorage	St Christophers	32	30	30	\$19,690	\$615.31	\$656.33	\$656.33
Interior	Venetie	Good Shepherd	201	9	4	\$4,678	\$23.27	\$519.78	\$1,169.50
Interior	Fairbanks	St Matthews	1,088	720	50	\$327,835	\$301.32	\$455.33	\$6,556.70
S. Central	Cordova	St Georges	71	69	11	\$25,308	\$356.45	\$366.78	\$2,300.73
Interior	Chalkyitsik	St Timothy	75	10	8	\$3,639	\$48.52	\$363.90	\$454.88
Interior	Minto	St Barnabas	40	40	11	\$14,000	\$350.00	\$350.00	\$1,272.73
South East	Haines	St Michael & All Angels	51	51	15	\$14,833	\$290.84	\$290.84	\$988.87
Arctic Coast	Point Hope	St Thomas	287	280	20	\$40,396	\$140.75	\$144.27	\$2,019.80
Interior	Huslia	Good Shepherd Mission	126	11	11	\$1,415	\$11.23	\$128.64	\$128.64
S. Central	Talkeetna	Denali Episcopal	9	9	7	\$880	\$97.78	\$97.78	\$125.71
Interior	Tanana	St James	132	43	10	\$3,946	\$29.89	\$91.77	\$394.60
Interior	Fort Yukon	St Stephens	202	105	23	\$6,922	\$34.27	\$65.92	\$300.96
Interior	Arctic Village	Bishop Rowe Chapel	141	60	0	\$2,000	\$14.18	\$33.33	\$0.00
Interior	Circle	Holy Trinity	78	65	10	\$740	\$9.49	\$11.38	\$74.00
Interior	Allakaket	St Johns in the Wilderness	137	135	1	\$252	\$1.84	\$1.87	\$252.00
Interior	Shageluk	St Lukes	117	117	3	\$200	\$1.71	\$1.71	\$66.67
Interior	Anvik	Christ Church	87	87	10	\$1	\$0.01	\$0.01	\$0.10
Interior	Birch Creek	St Peters	25	0	0	\$0	\$0.00	\$0.00	\$0.00
Interior	Eagle	St Johns	20	10	6	\$0	\$0.00	\$0.00	\$0.00
Interior	Grayling	St Pauls	260	235	5	\$0	\$0.00	\$0.00	\$0.00
Interior	Hughes	St Pauls	54	27	6	\$0	\$0.00	\$0.00	\$0.00
Interior	Nenana	St Marks	123	0	9	\$16,392	\$133.27	\$0.00	\$1,821.33
Arctic Coast	Noatak	Episcopal Congregation	10	0	0	\$0	\$0.00	\$0.00	\$0.00
Arctic Coast	Point Lay	St Albans in the Arctic	59	5	5	\$0	\$0.00	\$0.00	\$0.00
Interior	Rampart	Episcopal Congregation	54	40	6	\$0	\$0.00	\$0.00	\$0.00
Interior	Stevens Village	St Andrews	41	5	5	\$0	\$0.00	\$0.00	\$0.00
Interior	Tanacross	St Timothy	94	70	15	\$0	\$0.00	\$0.00	\$0.00
Total for the Entire Diocese			5,985	3,884	963	\$3,161,163	\$528.18	\$813.89	\$3,282.62
Average for the Entire Diocese			125	81	20	\$65,858	\$766.80	\$971.55	\$4,964.44

**Episcopal Diocese of Alaska
2021 Parochial Report
Data Sorted by
Active Baptized Member**

Deanery	City	Congregation Name	Active Baptized Members	Members in Good Standing	Average attendance	Operating Income Per			
						Total Operating Income	Baptized Member	Member in Good Standing	Average attendee
Interior	Fairbanks	St Matthews	1,088	720	50	\$327,835	\$301.32	\$455.33	\$6,556.70
S. Central	Anchorage	St Marys	753	712	11	\$1,036,522	\$1,376.52	\$1,455.79	\$94,229.27
Arctic Coast	Kivalina	Kivalina Epiphany	408	31	401	\$58,084	\$142.36	\$1,873.68	\$144.85
Arctic Coast	Point Hope	St Thomas	287	280	20	\$40,396	\$140.75	\$144.27	\$2,019.80
Interior	Grayling	St Pauls	260	235	5	\$0	\$0.00	\$0.00	\$0.00
S. Central	Anchorage	All Saints	222	96	30	\$258,328	\$1,163.64	\$2,690.92	\$8,610.93
Interior	Fort Yukon	St Stephens	202	105	23	\$6,922	\$34.27	\$65.92	\$300.96
Interior	Venetie	Good Shepherd	201	9	4	\$4,678	\$23.27	\$519.78	\$1,169.50
Interior	Arctic Village	Bishop Rowe Chapel	141	60	0	\$2,000	\$14.18	\$33.33	\$0.00
Interior	Allakaket	St Johns in the Wilderness	137	135	1	\$252	\$1.84	\$1.87	\$252.00
Interior	Tanana	St James	132	43	10	\$3,946	\$29.89	\$91.77	\$394.60
South East	Juneau	Holy Trinity	128	128	42	\$225,974	\$1,765.42	\$1,765.42	\$5,380.33
Interior	Huslia	Good Shepherd Mission	126	11	11	\$1,415	\$11.23	\$128.64	\$128.64
Interior	Nenana	St Marks	123	0	9	\$16,392	\$133.27	\$0.00	\$1,821.33
Interior	Shageluk	St Lukes	117	117	3	\$200	\$1.71	\$1.71	\$66.67
S. Central	Valdez	Epiphany Lutheran/Episcopal	110	107	11	\$103,553	\$941.39	\$967.79	\$9,413.91
South East	Sitka	St Peters by the Sea	99	96	15	\$148,329	\$1,498.27	\$1,545.09	\$9,888.60
Interior	Tanacross	St Timothys	94	70	15	\$0	\$0.00	\$0.00	\$0.00
Interior	Anvik	Christ Church	87	87	10	\$1	\$0.01	\$0.01	\$0.10
S. Central	Anchorage	Christ Church	85	83	27	\$157,056	\$1,847.72	\$1,892.24	\$5,816.89
Interior	Beaver	St Matthews	83	2	4	\$1,912	\$23.04	\$956.00	\$478.00
Interior	Circle	Holy Trinity	78	65	10	\$740	\$9.49	\$11.38	\$74.00
S. Central	Wasilla	St Davids	78	65	5	\$61,581	\$789.50	\$947.40	\$12,316.20
Interior	Chalkyitsik	St Timothys	75	10	8	\$3,639	\$48.52	\$363.90	\$454.88
S. Central	Cordova	St Georges	71	69	11	\$25,308	\$356.45	\$366.78	\$2,300.73
S. Central	Eagle River	Holy Spirit	66	55	23	\$96,151	\$1,456.83	\$1,748.20	\$4,180.48
S. Central	Kodiak	St James the Fisherman	65	50	13	\$93,965	\$1,445.62	\$1,879.30	\$7,228.08
South East	Juneau	St Brendan	60	57	21	\$109,229	\$1,820.48	\$1,916.30	\$5,201.38
Arctic Coast	Point Lay	St Albans in the Arctic	59	5	5	\$0	\$0.00	\$0.00	\$0.00
Interior	Hughes	St Pauls	54	27	6	\$0	\$0.00	\$0.00	\$0.00
Interior	Rampart	Episcopal Congregation	54	40	6	\$0	\$0.00	\$0.00	\$0.00
South East	Haines	St Michael & All Angels	51	51	15	\$14,833	\$290.84	\$290.84	\$988.87
South East	Ketchikan	St Johns	45	45	29	\$71,662	\$1,592.49	\$1,592.49	\$2,471.10
Arctic Coast	Kotzebue	St Georges in the Arctic .	42	22	4	\$29,294	\$697.48	\$1,331.55	\$7,323.50
Interior	Stevens Village	St Andrews	41	5	5	\$0	\$0.00	\$0.00	\$0.00
Interior	Minto	St Barnabas	40	40	11	\$14,000	\$350.00	\$350.00	\$1,272.73
South East	Wrangell	St Philips	33	31	5	\$50,992	\$1,545.21	\$1,644.90	\$10,198.40
S. Central	Anchorage	St Christophers	32	30	30	\$19,690	\$615.31	\$656.33	\$656.33
S. Central	Palmer	St Bartholomews	26	26	11	\$53,900	\$2,073.08	\$2,073.08	\$4,900.00
Interior	Birch Creek	St Peters	25	0	0	\$0	\$0.00	\$0.00	\$0.00
Interior	North Pole	St Judes	25	12	11	\$29,875	\$1,195.00	\$2,489.58	\$2,715.91
Interior	Eagle	St Johns	20	10	6	\$0	\$0.00	\$0.00	\$0.00
S. Central	Kenai	St Francis by the Sea	20	10	8	\$26,255	\$1,312.75	\$2,625.50	\$3,281.88
South East	Petersburg	St Andrews	11	11	1	\$16,069	\$1,460.82	\$1,460.82	\$16,069.00
Arctic Coast	Noatak	Episcopal Congregation	10	0	0	\$0	\$0.00	\$0.00	\$0.00
S. Central	Talkeetna	Denali Episcopal	9	9	7	\$880	\$97.78	\$97.78	\$125.71
S. Central	Homer	St Augustines	8	8	5	\$17,019	\$2,127.38	\$2,127.38	\$3,403.80
S. Central	Seward	St Peters	4	4	5	\$32,286	\$8,071.50	\$8,071.50	\$6,457.20
Total for the Entire Diocese			5,985	3,884	963	\$3,161,163	\$528.18	\$813.89	\$3,282.62
Average for the Entire Diocese			125	81	20	\$65,858	\$766.80	\$971.55	\$4,964.44

**Episcopal Diocese of Alaska
2021 Parochial Report
Data Sorted by
Members in Good Standing**

Deanery	City	Congregation Name	Active Baptized Members	Members in Good Standing	Average attendance	Operating Income Per			
						Total Operating Income	Baptized Member	Member in Good Standing	Average attendee
Interior	Fairbanks	St Matthews	1,088	720	50	\$327,835	\$301.32	\$455.33	\$6,556.70
S. Central	Anchorage	St Marys	753	712	11	\$1,036,522	\$1,376.52	\$1,455.79	\$94,229.27
Arctic Coast	Point Hope	St Thomas	287	280	20	\$40,396	\$140.75	\$144.27	\$2,019.80
Interior	Grayling	St Pauls	260	235	5	\$0	\$0.00	\$0.00	\$0.00
Interior	Allakaket	St Johns in the Wilderness	137	135	1	\$252	\$1.84	\$1.87	\$252.00
South East	Juneau	Holy Trinity	128	128	42	\$225,974	\$1,765.42	\$1,765.42	\$5,380.33
Interior	Shageluk	St Lukes	117	117	3	\$200	\$1.71	\$1.71	\$66.67
S. Central	Valdez	Epiphany Lutheran/Episcopa	110	107	11	\$103,553	\$941.39	\$967.79	\$9,413.91
Interior	Fort Yukon	St Stephens	202	105	23	\$6,922	\$34.27	\$65.92	\$300.96
S. Central	Anchorage	All Saints	222	96	30	\$258,328	\$1,163.64	\$2,690.92	\$8,610.93
South East	Sitka	St Peters by the Sea	99	96	15	\$148,329	\$1,498.27	\$1,545.09	\$9,888.60
Interior	Anvik	Christ Church	87	87	10	\$1	\$0.01	\$0.01	\$0.10
S. Central	Anchorage	Christ Church	85	83	27	\$157,056	\$1,847.72	\$1,892.24	\$5,816.89
Interior	Tanacross	St Timothys	94	70	15	\$0	\$0.00	\$0.00	\$0.00
S. Central	Cordova	St Georges	71	69	11	\$25,308	\$356.45	\$366.78	\$2,300.73
Interior	Circle	Holy Trinity	78	65	10	\$740	\$9.49	\$11.38	\$74.00
S. Central	Wasilla	St Davids	78	65	5	\$61,581	\$789.50	\$947.40	\$12,316.20
Interior	Arctic Village	Bishop Rowe Chapel	141	60	0	\$2,000	\$14.18	\$33.33	\$0.00
South East	Juneau	St Brendan	60	57	21	\$109,229	\$1,820.48	\$1,916.30	\$5,201.38
S. Central	Eagle River	Holy Spirit	66	55	23	\$96,151	\$1,456.83	\$1,748.20	\$4,180.48
South East	Haines	St Michael & All Angels	51	51	15	\$14,833	\$290.84	\$290.84	\$988.87
S. Central	Kodiak	St James the Fisherman	65	50	13	\$93,965	\$1,445.62	\$1,879.30	\$7,228.08
South East	Ketchikan	St Johns	45	45	29	\$71,662	\$1,592.49	\$1,592.49	\$2,471.10
Interior	Tanana	St James	132	43	10	\$3,946	\$29.89	\$91.77	\$394.60
Interior	Minto	St Barnabas	40	40	11	\$14,000	\$350.00	\$350.00	\$1,272.73
Interior	Rampart	Episcopal Congregation	54	40	6	\$0	\$0.00	\$0.00	\$0.00
Arctic Coast	Kivalina	Kivalina Epiphany	408	31	401	\$58,084	\$142.36	\$1,873.68	\$144.85
South East	Wrangell	St Philips	33	31	5	\$50,992	\$1,545.21	\$1,644.90	\$10,198.40
S. Central	Anchorage	St Christophers	32	30	30	\$19,690	\$615.31	\$656.33	\$656.33
Interior	Hughes	St Pauls	54	27	6	\$0	\$0.00	\$0.00	\$0.00
S. Central	Palmer	St Bartholomews	26	26	11	\$53,900	\$2,073.08	\$2,073.08	\$4,900.00
Arctic Coast	Kotzebue	St Georges in the Arctic .	42	22	4	\$29,294	\$697.48	\$1,331.55	\$7,323.50
Interior	North Pole	St Judes	25	12	11	\$29,875	\$1,195.00	\$2,489.58	\$2,715.91
Interior	Huslia	Good Shepherd Mission	126	11	11	\$1,415	\$11.23	\$128.64	\$128.64
South East	Petersburg	St Andrews	11	11	1	\$16,069	\$1,460.82	\$1,460.82	\$16,069.00
Interior	Chalkyitsik	St Timothys	75	10	8	\$3,639	\$48.52	\$363.90	\$454.88
Interior	Eagle	St Johns	20	10	6	\$0	\$0.00	\$0.00	\$0.00
S. Central	Kenai	St Francis by the Sea	20	10	8	\$26,255	\$1,312.75	\$2,625.50	\$3,281.88
S. Central	Talkeetna	Denali Episcopal	9	9	7	\$880	\$97.78	\$97.78	\$125.71
Interior	Venetie	Good Shepherd	201	9	4	\$4,678	\$23.27	\$519.78	\$1,169.50
S. Central	Homer	St Augustines	8	8	5	\$17,019	\$2,127.38	\$2,127.38	\$3,403.80
Arctic Coast	Point Lay	St Albans in the Arctic	59	5	5	\$0	\$0.00	\$0.00	\$0.00
Interior	Stevens Village	St Andrews	41	5	5	\$0	\$0.00	\$0.00	\$0.00
S. Central	Seward	St Peters	4	4	5	\$32,286	\$8,071.50	\$8,071.50	\$6,457.20
Interior	Beaver	St Matthews	83	2	4	\$1,912	\$23.04	\$956.00	\$478.00
Interior	Birch Creek	St Peters	25	0	0	\$0	\$0.00	\$0.00	\$0.00
Interior	Nenana	St Marks	123	0	9	\$16,392	\$133.27	\$0.00	\$1,821.33
Arctic Coast	Noatak	Episcopal Congregation	10	0	0	\$0	\$0.00	\$0.00	\$0.00
		Total for the Entire Diocese	5,985	3,884	963	\$3,161,163	\$528.18	\$813.89	\$3,282.62
		Average for the Entire Diocese	125	81	20	\$65,858	\$766.80	\$971.55	\$4,964.44

**Episcopal Diocese of Alaska
2021 Parochial Report
Data Sorted by
Average Sunday Attendance**

Deanery	City	Congregation Name	Active Baptized Members	Members in Good Standing	Average attendance	Operating Income Per			
						Total Operating Income	Baptized Member	Member in Good Standing	Average attendee
Arctic Coast	Kivalina	Kivalina Epiphany	408	31	401	\$58,084	\$142.36	\$1,873.68	\$144.85
Interior	Fairbanks	St Matthews	1,088	720	50	\$327,835	\$301.32	\$455.33	\$6,556.70
South East	Juneau	Holy Trinity	128	128	42	\$225,974	\$1,765.42	\$1,765.42	\$5,380.33
S. Central	Anchorage	All Saints	222	96	30	\$258,328	\$1,163.64	\$2,690.92	\$8,610.93
S. Central	Anchorage	St Christophers	32	30	30	\$19,690	\$615.31	\$656.33	\$656.33
South East	Ketchikan	St Johns	45	45	29	\$71,662	\$1,592.49	\$1,592.49	\$2,471.10
S. Central	Anchorage	Christ Church	85	83	27	\$157,056	\$1,847.72	\$1,892.24	\$5,816.89
S. Central	Eagle River	Holy Spirit	66	55	23	\$96,151	\$1,456.83	\$1,748.20	\$4,180.48
Interior	Fort Yukon	St Stephens	202	105	23	\$6,922	\$34.27	\$65.92	\$300.96
South East	Juneau	St Brendan	60	57	21	\$109,229	\$1,820.48	\$1,916.30	\$5,201.38
Arctic Coast	Point Hope	St Thomas	287	280	20	\$40,396	\$140.75	\$144.27	\$2,019.80
South East	Haines	St Michael & All Angels	51	51	15	\$14,833	\$290.84	\$290.84	\$988.87
South East	Sitka	St Peters by the Sea	99	96	15	\$148,329	\$1,498.27	\$1,545.09	\$9,888.60
Interior	Tanacross	St Timothys	94	70	15	\$0	\$0.00	\$0.00	\$0.00
S. Central	Kodiak	St James the Fisherman	65	50	13	\$93,965	\$1,445.62	\$1,879.30	\$7,228.08
S. Central	Anchorage	St Marys	753	712	11	\$1,036,522	\$1,376.52	\$1,455.79	\$94,229.27
S. Central	Cordova	St Georges	71	69	11	\$25,308	\$356.45	\$366.78	\$2,300.73
Interior	Huslia	Good Shepherd Mission	126	11	11	\$1,415	\$11.23	\$128.64	\$128.64
Interior	Minto	St Barnabas	40	40	11	\$14,000	\$350.00	\$350.00	\$1,272.73
Interior	North Pole	St Judes	25	12	11	\$29,875	\$1,195.00	\$2,489.58	\$2,715.91
S. Central	Palmer	St Bartholomews	26	26	11	\$53,900	\$2,073.08	\$2,073.08	\$4,900.00
S. Central	Valdez	Epiphany Lutheran/Episcopal	110	107	11	\$103,553	\$941.39	\$967.79	\$9,413.91
Interior	Anvik	Christ Church	87	87	10	\$1	\$0.01	\$0.01	\$0.10
Interior	Circle	Holy Trinity	78	65	10	\$740	\$9.49	\$11.38	\$74.00
Interior	Tanana	St James	132	43	10	\$3,946	\$29.89	\$91.77	\$394.60
Interior	Nenana	St Marks	123	0	9	\$16,392	\$133.27	\$0.00	\$1,821.33
Interior	Chalkyitsik	St Timothys	75	10	8	\$3,639	\$48.52	\$363.90	\$454.88
S. Central	Kenai	St Francis by the Sea	20	10	8	\$26,255	\$1,312.75	\$2,625.50	\$3,281.88
S. Central	Talkeetna	Denali Episcopal	9	9	7	\$880	\$97.78	\$97.78	\$125.71
Interior	Eagle	St Johns	20	10	6	\$0	\$0.00	\$0.00	\$0.00
Interior	Hughes	St Pauls	54	27	6	\$0	\$0.00	\$0.00	\$0.00
Interior	Rampart	Episcopal Congregation	54	40	6	\$0	\$0.00	\$0.00	\$0.00
Interior	Grayling	St Pauls	260	235	5	\$0	\$0.00	\$0.00	\$0.00
S. Central	Homer	St Augustines	8	8	5	\$17,019	\$2,127.38	\$2,127.38	\$3,403.80
Arctic Coast	Point Lay	St Albans in the Arctic	59	5	5	\$0	\$0.00	\$0.00	\$0.00
S. Central	Seward	St Peters	4	4	5	\$32,286	\$8,071.50	\$8,071.50	\$6,457.20
Interior	Stevens Village	St Andrews	41	5	5	\$0	\$0.00	\$0.00	\$0.00
S. Central	Wasilla	St Davids	78	65	5	\$61,581	\$789.50	\$947.40	\$12,316.20
South East	Wrangell	St Philips	33	31	5	\$50,992	\$1,545.21	\$1,644.90	\$10,198.40
Interior	Beaver	St Matthews	83	2	4	\$1,912	\$23.04	\$956.00	\$478.00
Arctic Coast	Kotzebue	St Georges in the Arctic	42	22	4	\$29,294	\$697.48	\$1,331.55	\$7,323.50
Interior	Venetie	Good Shepherd	201	9	4	\$4,678	\$23.27	\$519.78	\$1,169.50
Interior	Shageluk	St Lukes	117	117	3	\$200	\$1.71	\$1.71	\$66.67
Interior	Allakaket	St Johns in the Wilderness	137	135	1	\$252	\$1.84	\$1.87	\$252.00
South East	Petersburg	St Andrews	11	11	1	\$16,069	\$1,460.82	\$1,460.82	\$16,069.00
Interior	Arctic Village	Bishop Rowe Chapel	141	60	0	\$2,000	\$14.18	\$33.33	\$0.00
Interior	Birch Creek	St Peters	25	0	0	\$0	\$0.00	\$0.00	\$0.00
Arctic Coast	Noatak	Episcopal Congregation	10	0	0	\$0	\$0.00	\$0.00	\$0.00
Total for the Entire Diocese			5,985	3,884	963	\$3,161,163	\$528.18	\$813.89	\$3,282.62
Average for the Entire Diocese			125	81	20	\$65,858	\$766.80	\$971.55	\$4,964.44

**Episcopal Diocese of Alaska
2021 vs 2020 Parochial Report**

Deanery	City	Congregation Name	2021				2020				2021 vs 2020			
			Active Baptized Members	Members in Good Standing	Average attendance	Total Operating Income	Active Baptized Members	Members in Good Standing	Average attendance	Total Operating Income	Active Baptized Members	Members in Good Standing	Average attendance	Total Operating Income
Arctic Coast	Kivalina	Kivalina Epiphany	408	31	401	\$58,084	402	19	21	\$38,972	6	12	380	\$19,112
Arctic Coast	Kotzebue	St Georges in the Arctic .	42	22	4	\$29,294	44	26	9	\$34,969	(2)	(4)	(5)	(\$5,675)
Arctic Coast	Noatak	Episcopal Congregation	10	0	0	\$0	10	0	0	\$0	0	0	0	\$0
Arctic Coast	Point Hope	St Thomas	287	280	20	\$40,396	289	280	13	\$31,681	(2)	0	7	\$8,715
Arctic Coast	Point Lay	St Albans in the Arctic	59	5	5	\$0	59	5	5	\$0	0	0	0	\$0
Interior	Allakaket	St Johns in the Wilderness	137	135	1	\$252	142	140	5	\$0	(5)	(5)	(4)	\$252
Interior	Anvik	Christ Church	87	87	10	\$1	88	88	10	\$0	(1)	(1)	0	\$1
Interior	Arctic Village	Bishop Rowe Chapel	141	60	0	\$2,000	147	60	13	\$0	(6)	0	(13)	\$2,000
Interior	Beaver	St Matthews	83	2	4	\$1,912	84	2	2	\$352	(1)	0	2	\$1,560
Interior	Birch Creek	St Peters	25	0	0	\$0	25	0	0	\$0	0	0	0	\$0
Interior	Chalkyitsik	St Timothy	75	10	8	\$3,639	76	10	8	\$2,252	(1)	0	0	\$1,387
Interior	Circle	Holy Trinity	78	65	10	\$740	79	65	10	\$79	(1)	0	0	\$661
Interior	Eagle	St Johns	20	10	6	\$0	20	10	10	\$0	0	0	(4)	\$0
Interior	Fairbanks	St Matthews	1,088	720	50	\$327,835	1,092	1,092	81	\$245,334	(4)	(372)	(31)	\$82,501
Interior	Fort Yukon	St Stephens	202	105	23	\$6,922	214	118	15	\$3,982	(12)	(13)	8	\$2,940
Interior	Grayling	St Pauls	260	235	5	\$0	260	235	5	\$0	0	0	0	\$0
Interior	Hughes	St Pauls	54	27	6	\$0	54	27	12	\$0	0	0	(6)	\$0
Interior	Huslia	Good Shepherd Mission	126	11	11	\$1,415	127	11	11	\$893	(1)	0	0	\$522
Interior	Minto	St Barnabas	40	40	11	\$14,000	44	44	0	\$14,000	(4)	(4)	11	\$0
Interior	Nenana	St Marks	123	0	9	\$16,392	123	60	18	\$14,015	0	(60)	(9)	\$2,377
Interior	North Pole	St Judes	25	12	11	\$29,875	27	11	11	\$36,551	(2)	1	0	(\$6,676)
Interior	Rampart	Episcopal Congregation	54	40	6	\$0	54	40	6	\$0	0	0	0	\$0
Interior	Shageluk	St Lukes	117	117	3	\$200	121	118	0	\$0	(4)	(1)	3	\$200
Interior	Stevens Village	St Andrews	41	5	5	\$0	42	5	5	\$0	(1)	0	0	\$0
Interior	Tanacross	St Timothy	94	70	15	\$0	94	70	15	\$50	0	0	0	(\$50)
Interior	Tanana	St James	132	43	10	\$3,946	132	43	5	\$10,466	0	0	5	(\$6,520)
Interior	Venetie	Good Shepherd	201	9	4	\$4,678	211	9	5	\$2,691	(10)	0	(1)	\$1,987

44 of 47

**Episcopal Diocese of Alaska
2021 vs 2020 Parochial Report**

Deanery	City	Congregation Name	2021				2020				2021 vs 2020			
			Active Baptized Members	Members in Good Standing	Average attendance	Total Operating Income	Active Baptized Members	Members in Good Standing	Average attendance	Total Operating Income	Active Baptized Members	Members in Good Standing	Average attendance	Total Operating Income
S. Central	Anchorage	All Saints	222	96	30	\$258,328	225	96	44	\$234,598	(3)	0	(14)	\$23,730
S. Central	Anchorage	Christ Church	85	83	27	\$157,056	88	84	26	\$119,401	(3)	(1)	1	\$37,655
S. Central	Anchorage	St Christophers	32	30	30	\$19,690	32	30	30	\$19,690	0	0	0	\$0
S. Central	Anchorage	St Marys	753	712	11	\$1,036,522	746	710	204	\$837,026	7	2	(193)	\$199,496
S. Central	Cordova	St Georges	71	69	11	\$25,308	78	78	12	\$22,224	(7)	(9)	(1)	\$3,084
S. Central	Eagle River	Holy Spirit	66	55	23	\$96,151	69	57	30	\$91,356	(3)	(2)	(7)	\$4,795
S. Central	Homer	St Augustines	8	8	5	\$17,019	11	11	6	\$12,279	(3)	(3)	(1)	\$4,740
S. Central	Kenai	St Francis by the Sea	20	10	8	\$26,255	22	7	6	\$19,457	(2)	3	2	\$6,798
S. Central	Kodiak	St James the Fisherman	65	50	13	\$93,965	68	56	22	\$78,958	(3)	(6)	(9)	\$15,007
S. Central	Palmer	St Bartholomews	26	26	11	\$53,900	24	24	26	\$49,522	2	2	(15)	\$4,378
S. Central	Seward	St Peters	4	4	5	\$32,286	12	10	22	\$26,226	(8)	(6)	(17)	\$6,060
S. Central	Talkeetna	Denali Episcopal	9	9	7	\$880	2	2	5	\$1,275	7	7	2	(\$395)
S. Central	Valdez	Epiphany Lutheran/Episcopal	110	107	11	\$103,553	107	107	30	\$103,553	3	0	(19)	\$0
S. Central	Wasilla	St Davids	78	65	5	\$61,581	80	68	21	\$59,833	(2)	(3)	(16)	\$1,748
South East	Haines	St Michael & All Angels	51	51	15	\$14,833	51	51	12	\$12,243	0	0	3	\$2,590
South East	Juneau	Holy Trinity	128	128	42	\$225,974	145	123	67	\$222,111	(17)	5	(25)	\$3,863
South East	Juneau	St Brendan	60	57	21	\$109,229	75	75	40	\$104,170	(15)	(18)	(19)	\$5,059
South East	Ketchikan	St Johns	45	45	29	\$71,662	55	46	30	\$114,666	(10)	(1)	(1)	(\$43,004)
South East	Petersburg	St Andrews	11	11	1	\$16,069	11	11	6	\$13,757	0	0	(5)	\$2,312
South East	Sitka	St Peters by the Sea	99	96	15	\$148,329	111	109	47	\$155,118	(12)	(13)	(32)	(\$6,789)
South East	Wrangell	St Philips	33	31	5	\$50,992	35	35	12	\$43,956	(2)	(4)	(7)	\$7,036
	Total for the Entire Diocese		5,985	3,884	963	\$3,161,163	6,107	4,378	993	\$2,777,706	(122)	(494)	(30)	\$383,457
	Average for the Entire Diocese		125	81	20	\$65,858	127	91	21	\$57,869	(3)	(10)	(1)	\$7,989
	2021													
	Arctic Coast		806	338	430	127,774								
	Interior		3,203	1,803	208	413,807								
	South Central		1,549	1,324	197	1,982,494								
	Southeast		427	419	128	637,088								
			5,985	3,884	963	3,161,163								
	2020													
	Arctic Coast		804	330	48	105,622								
	Interior		3,256	2,258	247	330,665								
	South Central		1,564	1,340	484	1,675,398								
	Southeast		483	450	214	666,021								
			6,107	4,378	993	2,777,706								
	Difference													
	Arctic Coast		2	8	382	22,152								
	Interior		(53)	(455)	(39)	83,142								
	South Central		(15)	(16)	(287)	307,096								
	Southeast		(56)	(31)	(86)	(28,933)								
			(122)	(494)	(30)	383,457								

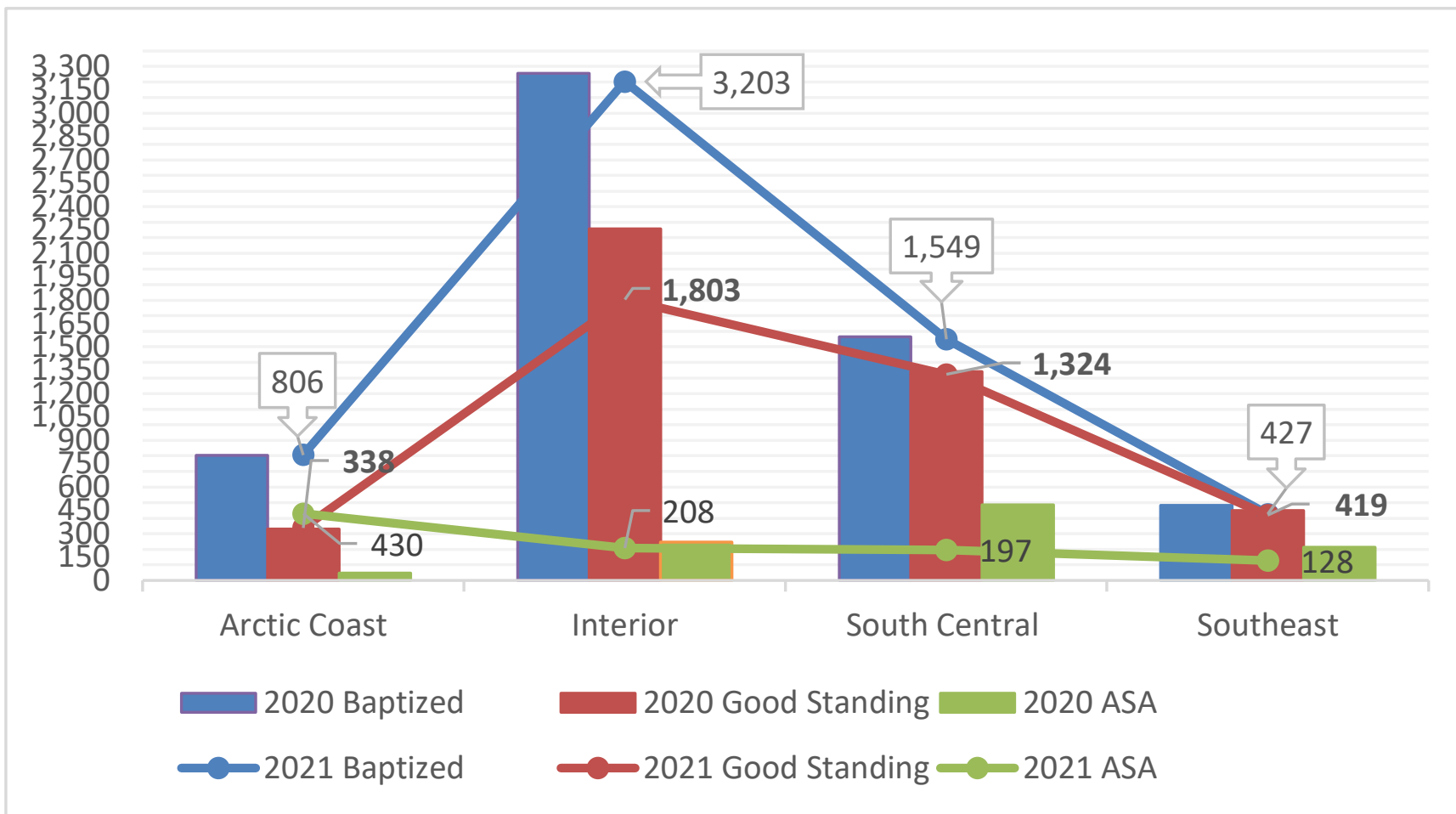
45 of 47

Episcopal Diocese of Alaska

2021 vs 2020

Baptized Members, Members in Good Standing, Average Sunday Attendance

46 of 47



Episcopal Diocese of Alaska 2021 vs 2020 Operating Income

